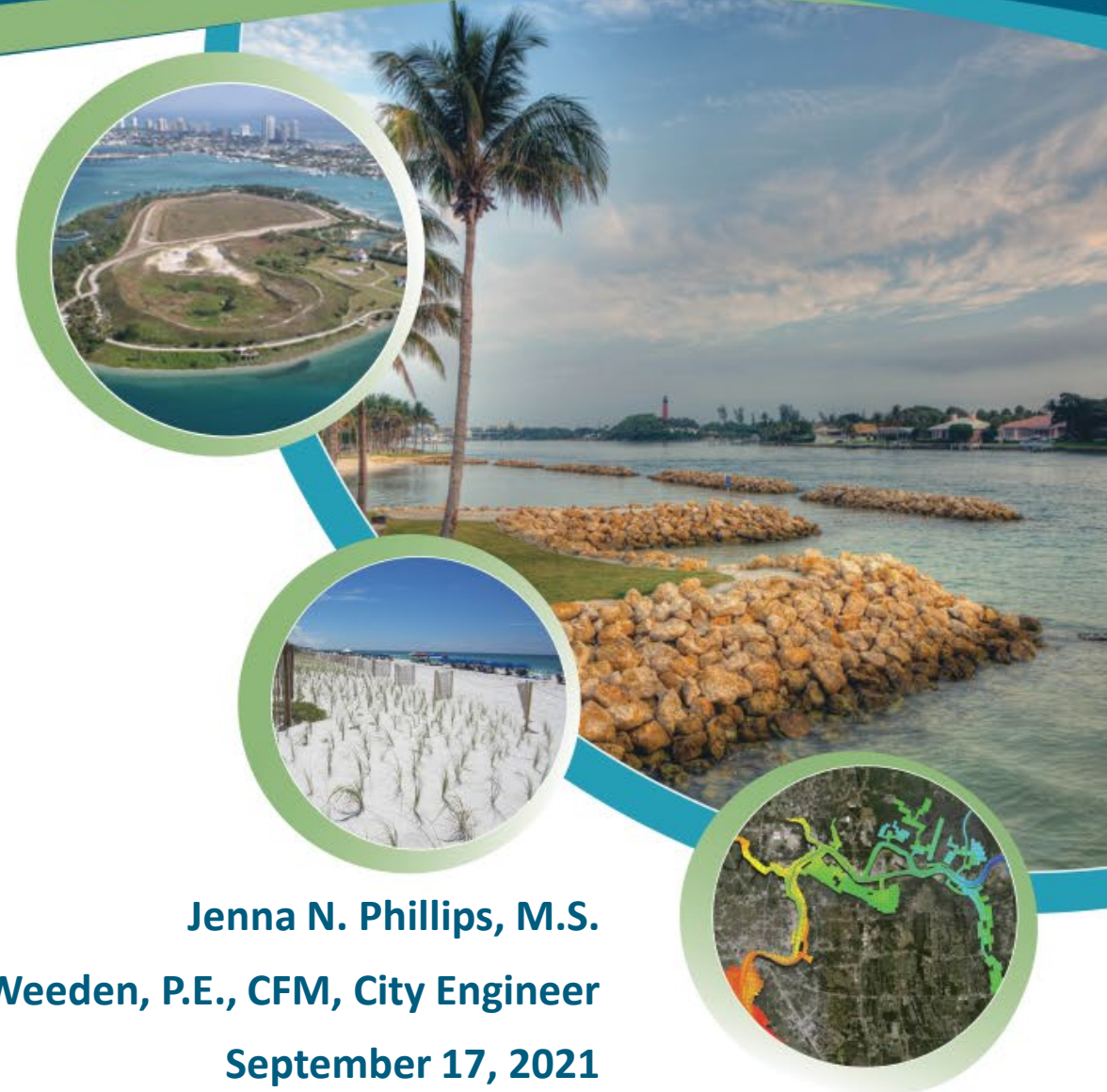




TAYLOR ENGINEERING, INC.

A More Resilient Venice

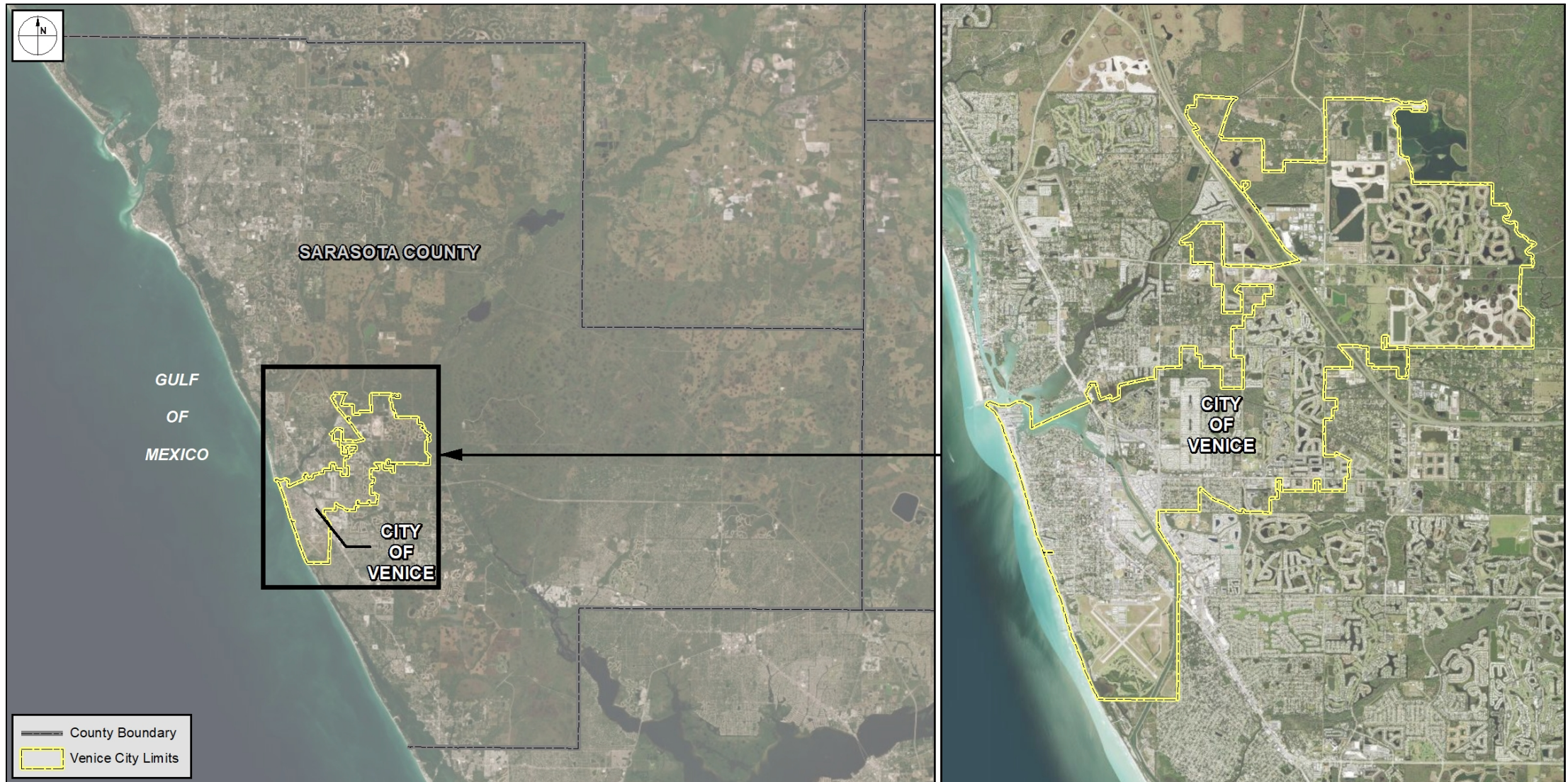


Jenna N. Phillips, M.S.

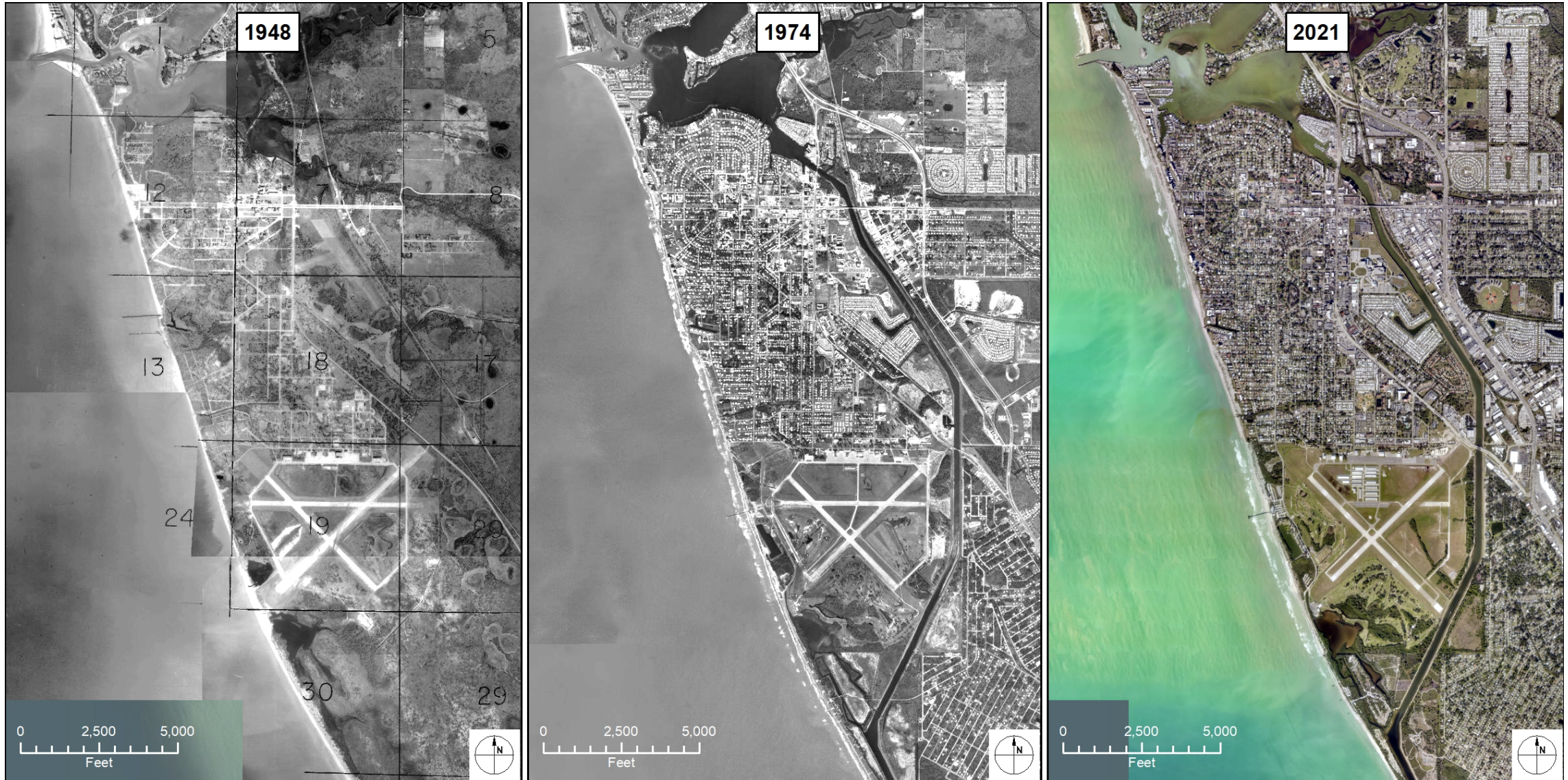
Kathleen Weeden, P.E., CFM, City Engineer

September 17, 2021

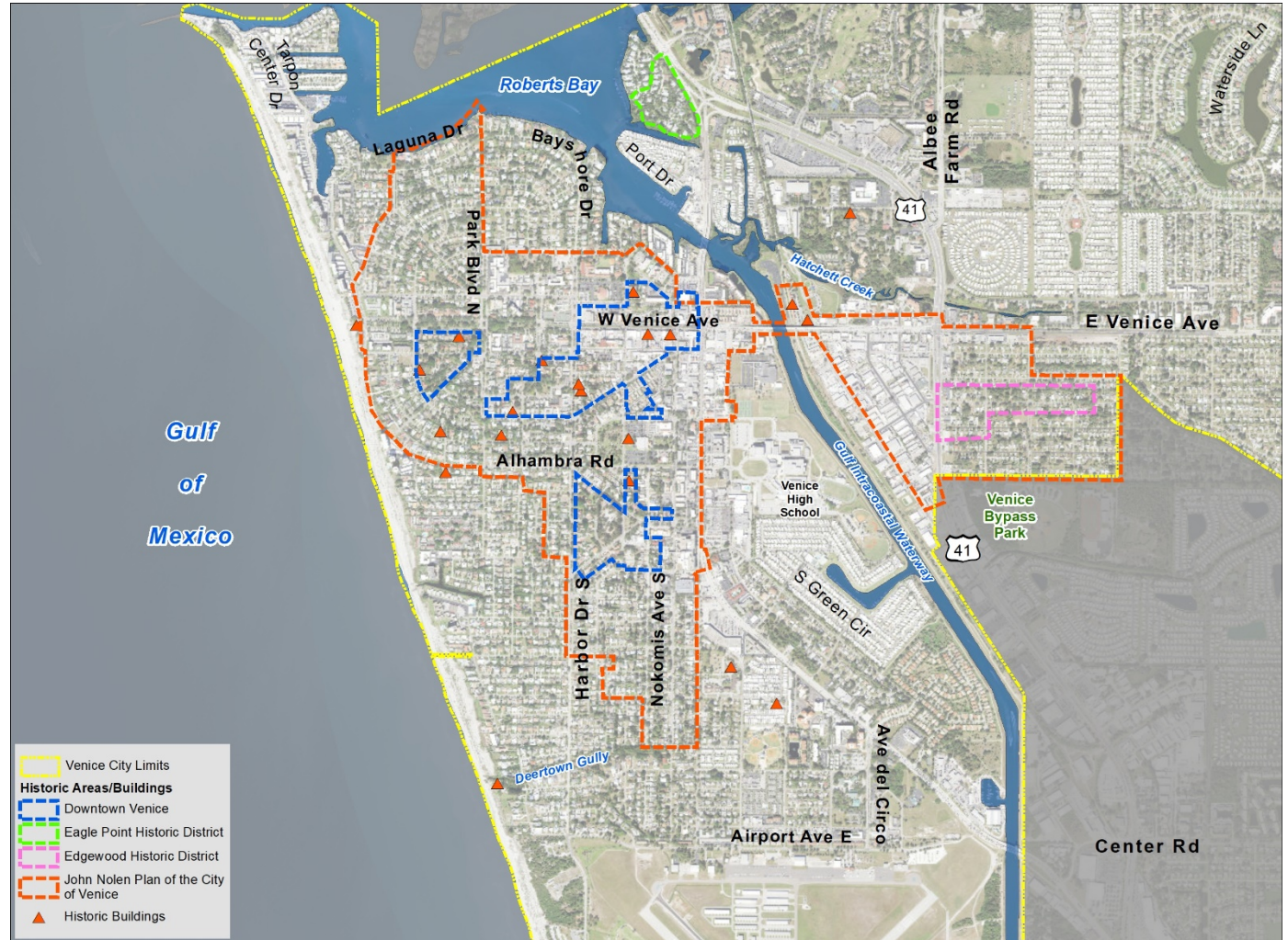
Overview & Location



History of Venice



History of Venice



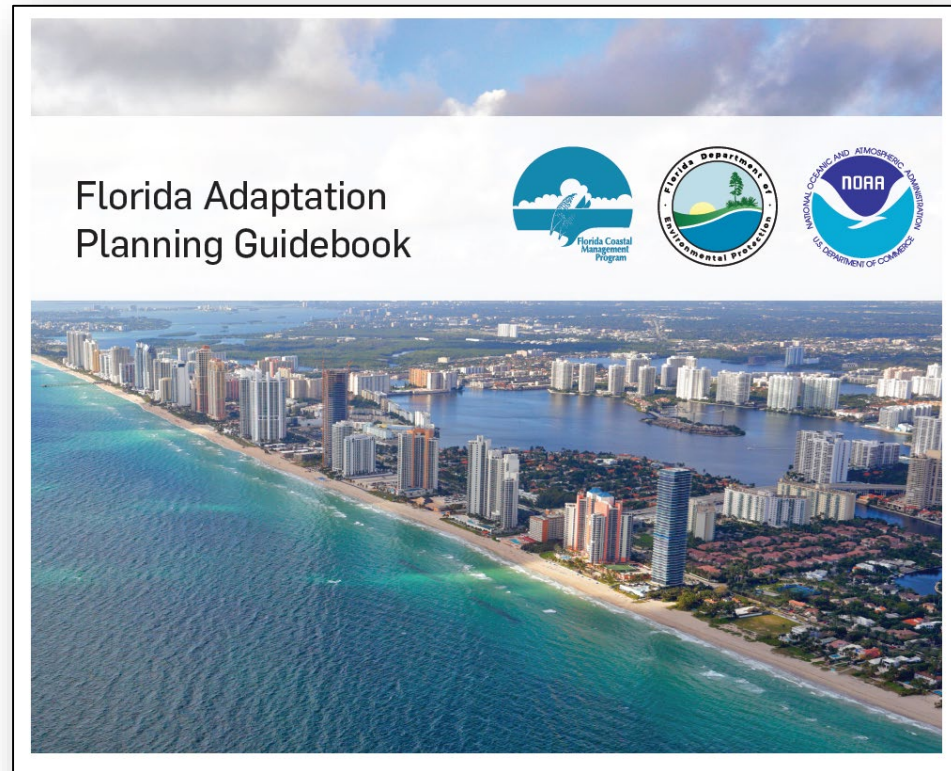
Project Background

- Study funded by FL Resilient Coastlines Program (FRCP) Grant
 - Grant for Resilience Planning
 - FRCP is within FL Dept of Environmental Protection
- Work accomplished:
 - Background Review & Data Identification
 - Vulnerability Assessment for City Infrastructure
 - Adaptation and Resilience Strategies
 - Community Outreach and Stakeholder Engagement
 - Final Resilience Plan Report



Source: floridadep.gov/ResilientCoastlines

FRCP Planning Guidance



CONTEXT

- Assemble a steering committee
- Set guiding principles and motivations
- Establish planning area and describe geographic context
- Define public outreach approach and opportunities for community participation

ADAPTATION STRATEGIES

- Assess adaptive capacities
- Prioritize adaptation needs
- Identify adaptation strategies
- Integrate into existing plans



VULNERABILITY ASSESSMENT

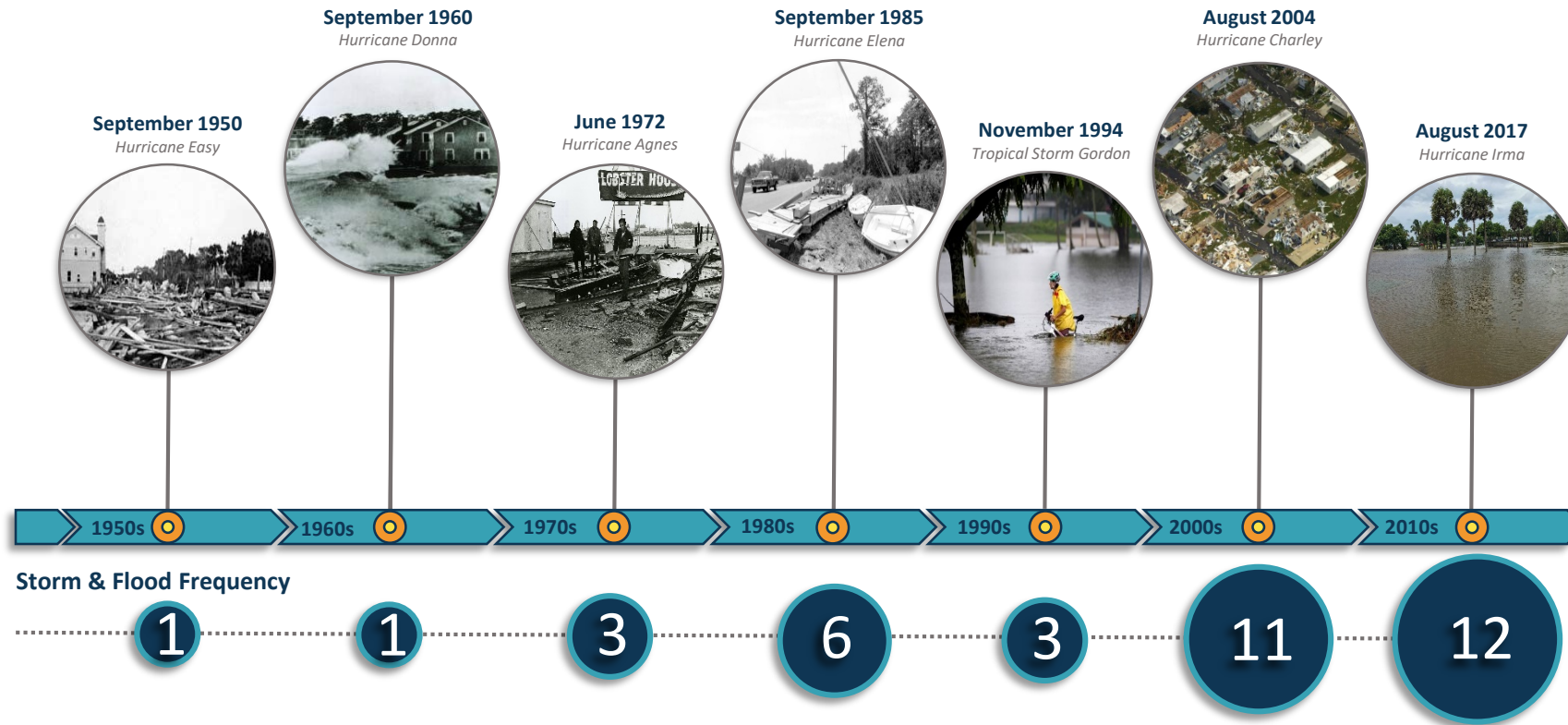
- Conduct an exposure analysis
- Conduct a sensitivity analysis
- Assign focus areas

IMPLEMENTATION STRATEGIES

- Assess implementation capabilities
- Create a schedule of activities, actions, and actors
- Monitor and evaluate

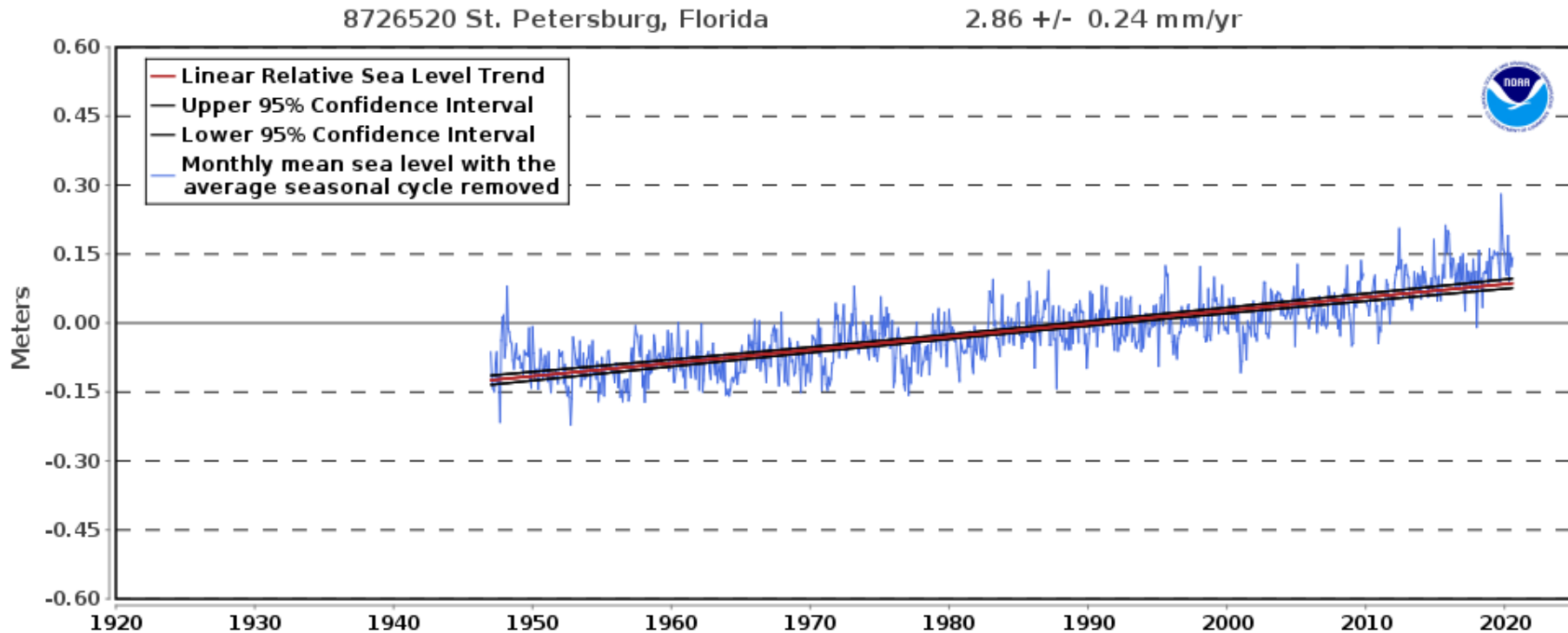
Source: floridadep.gov/rcp/florida-resilient-coastlines-program

Historical Storm Trends



History of Storm & Flood Events Impacting the City of Venice

Sea Level Trend

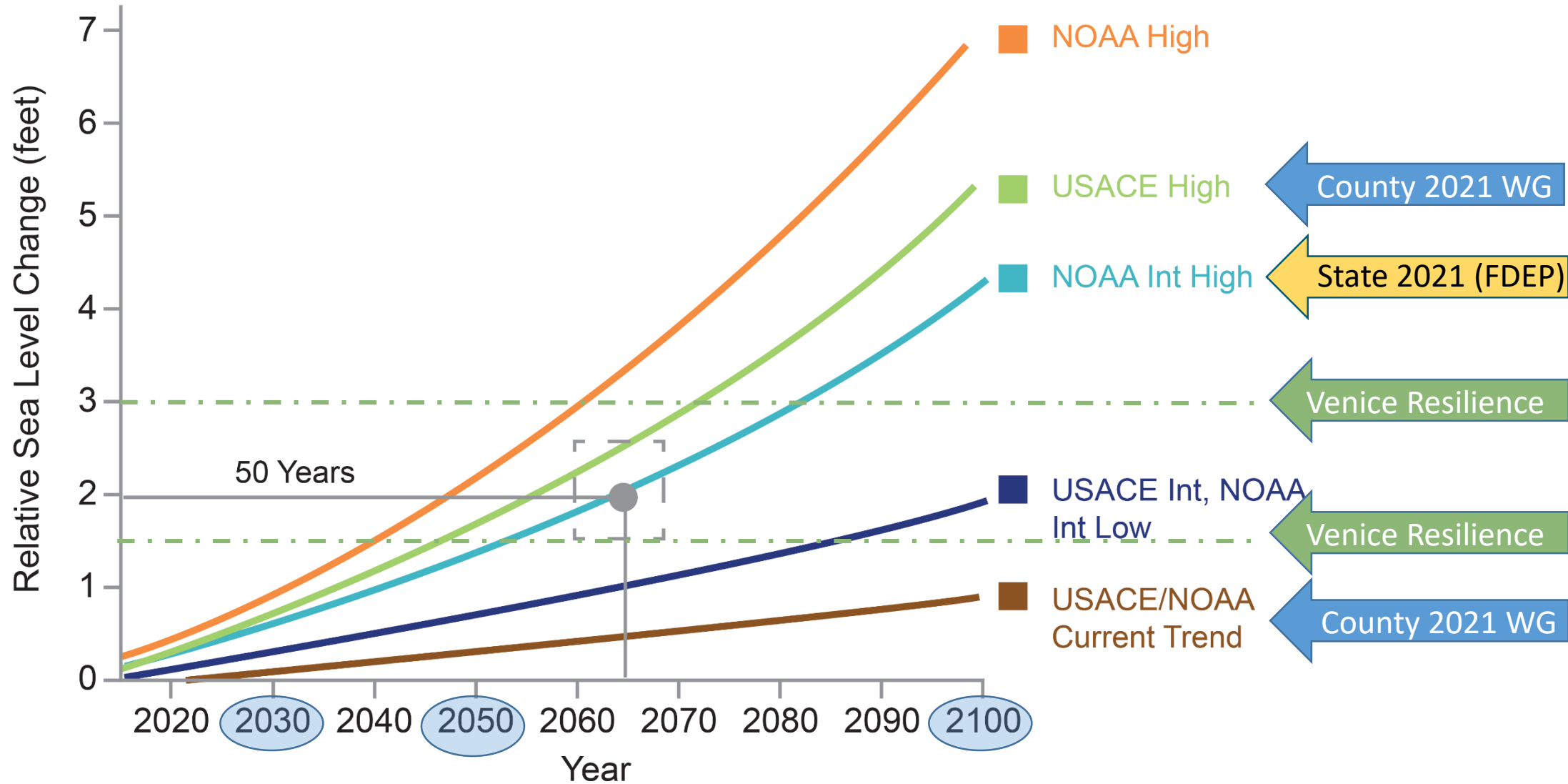


- Data at the St Petersburg NOAA Tide Gauge has been collected continuously since 1947
- This historic data shows a trend of about ~1 ft of rise over 100 yrs
- Global SLR is ~ 3mm per year, similar to this

Sea Level Projections Used in Other Local Studies

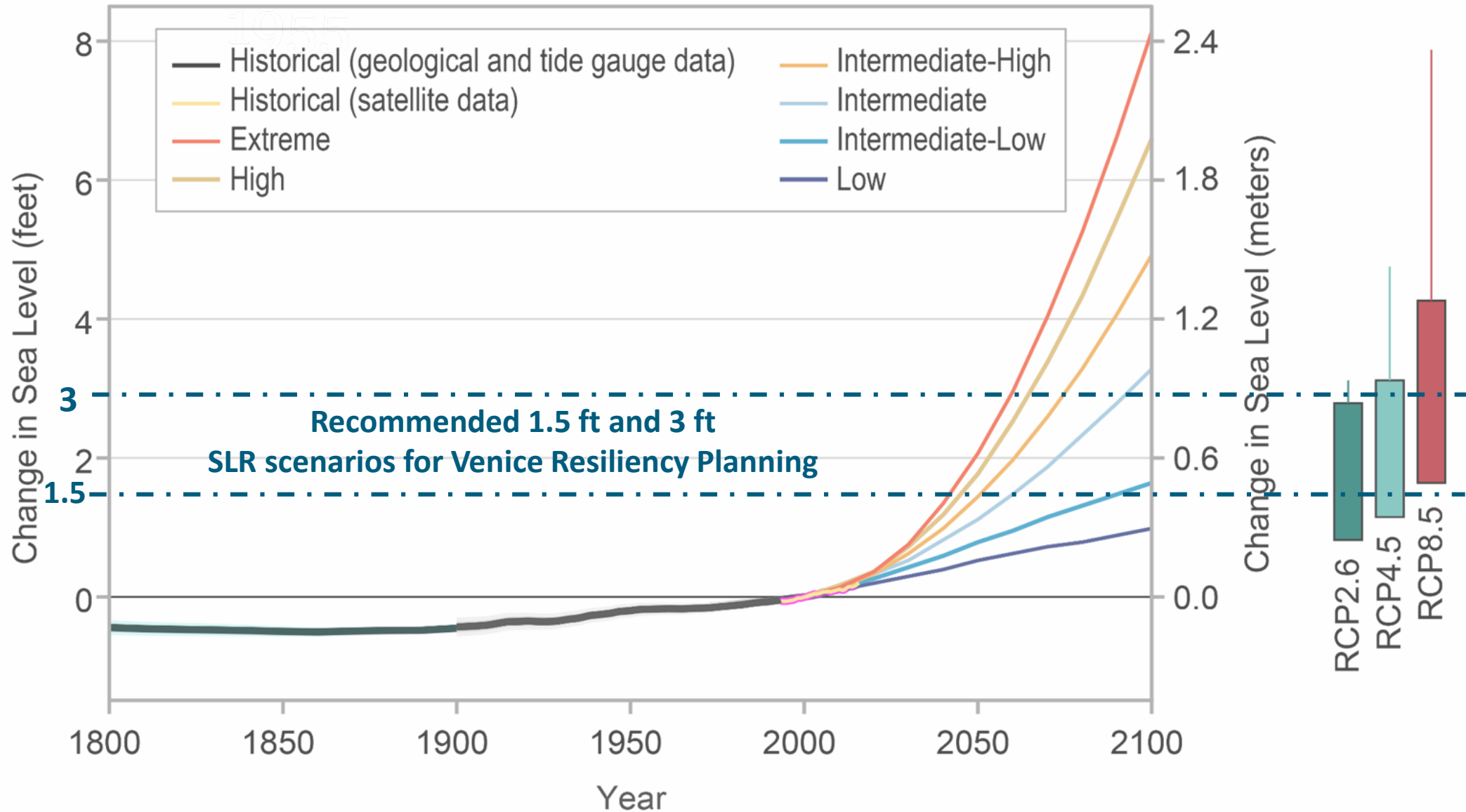
- Sarasota County Post Disaster Redevelopment Plan (2015)
 - Mapped 1 to 4 ft of sea level rise and a Category 1 storm surge
- City of Sarasota Climate Adaptation Plan (2017)
 - Studied 1 ft, 2 ft, 4 ft, and 6 ft of sea level rise above current MSL
 - Estimated 1 ft to 1.5 ft increase of sea level by 2050 (NOAA Low to NOAA Intermediate)
- Tampa Bay Regional Planning Council's Climate Science Advisory Panel (2019)
 - Estimates 1 ft to 2.5 feet by 2050 and 2 to 8.5 feet by 2100
 - Recommended using NOAA Intermediate and High scenarios as most likely
- Tampa Bay Transportation Pilot - US DOT Federal Highway Administration (2020)
 - Recommended using NOAA Intermediate-Low scenario at 2045
- Sarasota County Sea Level Rise Working Group (2021)
 - Assessed facilities at USACE Low and High sea level rise scenarios at 2030, 2050, 2100
- SW FL Regional Planning Council Climate Planning - Florida Gulf Coast University
 - (ongoing - due in 2021)

Comparison of Sea Level Projections



Source: Fourth National Climate Assessment (2018)

Sea Level Trends and Projections



Source: Fourth National Climate Assessment (2018) and IPCC AR5 (2013)

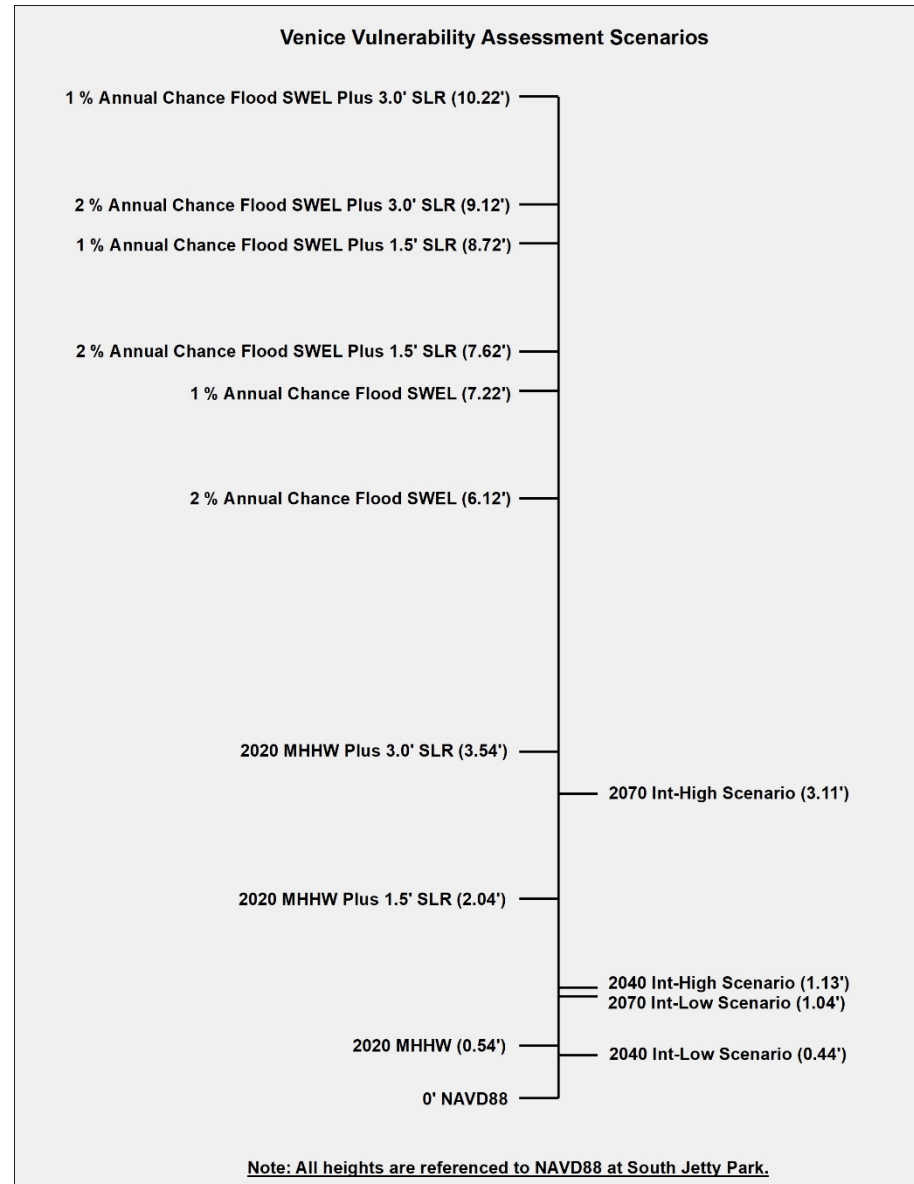
Likelihood of Occurrence

- Based on carbon emissions
 - RCP2.6 - dramatic reduction of carbon emissions
 - RCP4.5 - modest reduction
 - RCP8.5 - no change

Sea Level Rise Scenario	RCP2.6	RCP4.5	RCP8.5
Low (0.3m)	94%	98%	100%
Intermediate-Low (0.5m)	49%	73%	96%
Intermediate (1m)	2%	3%	17%
Intermediate-High (1.5m)	0.4%	0.5%	1.3%
High (2m)	0.1%	0.1%	0.3%
Extreme (2.5m)	0.05%	0.05%	0.1%

Source: Sweet et al (NOAA 2017 Technical Report CO-OPS 083)

City's Update to 2021 Plan



Coastal Flooding Vulnerability Assessment



Data Inputs:

- Location of Asset
- Elevation of Land & Asset
- Ownership (City/County/Private)
- Historic Status

Flood Scenarios:

- MHHW (Nuisance Flooding)
- 1.5 ft & 3 ft Sea Level Rise
- 2% (50-yr) & 1% (100-yr) Annual Chance Storm Surge Flooding

Categorized List of Vulnerable Assets:

- Critical & Essential Publicly-Owned Facilities
- Historic Structures
- Historic Districts

Flood Scenarios Analyzed

- GIS-based analysis
- Assessed 9 different scenarios
- Compared elevations of City's chosen coastal infrastructure to each flood scenario

Flood Inundation Scenarios	
1	2020 water level (MHHW)
2	1.5 ft sea level rise
3	3 ft sea level rise
4	2020 water level (MHHW) + 2% annual chance flood (50 yr)
5	1.5 ft sea level rise + 2% annual chance flood (50 yr)
6	3 ft sea level rise + 2% annual chance flood (50 yr)
7	2020 water level (MHHW) + 1% annual chance flood (100 yr)
8	1.5 ft sea level rise + 1% annual chance flood (100 yr)
9	3 ft sea level rise + 1% annual chance flood (100 yr)

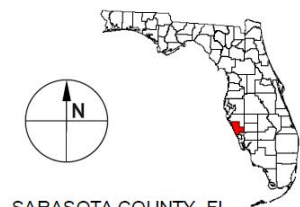
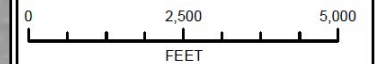


Taylor Engineering, Inc.
 1800 2nd Street, Suite 714
 Sarasota, FL 34236
 CERTIFICATE OF AUTHORIZATION # 4815

**MEAN HIGHER HIGH WATER
 CRITICAL PUBLIC INFRASTRUCTURE
 AND HISTORIC AREAS
 WITHIN CITY LIMITS**

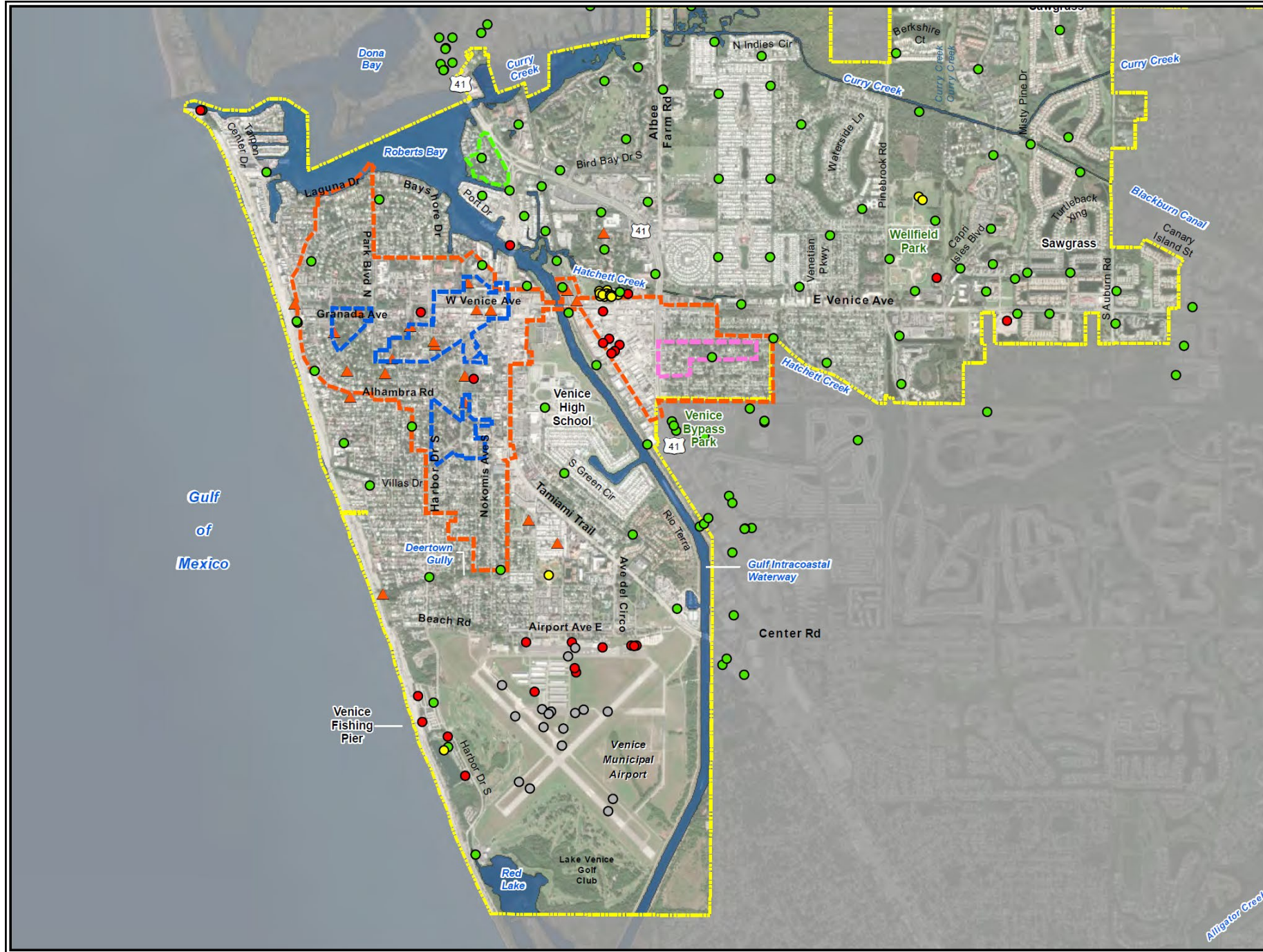
Legend

- Venice City Limits
- Critical Infrastructure**
 - Building
 - Utilities Buildings
 - Utilities Infrastructure
 - Runway/Parking
- Historic Areas/Buildings**
 - Downtown Venice
 - Eagle Point Historic District
 - Edgewood Historic District
 - John Nolen Plan of the City of Venice
 - Historic Buildings
- Return Period**
 - Mean Higher High Water

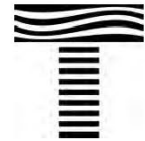


SARASOTA COUNTY, FL

Disclaimer: This figure is not intended to show the exact location of flooding and does not account for all variables affecting future flooding such as ground water impacts, changing precipitation patterns, future construction, or erosion. As such, actual future flooding may differ from this graphic. This graphic should be used strictly as a planning reference tool and not for navigation, permitting, insurance rating, or other legal or regulatory purposes.



Alligator Creek



Taylor Engineering, Inc.

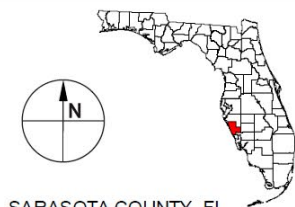
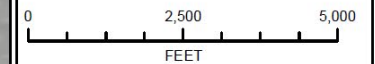
1800 2nd Street, Suite 714
Sarasota, FL 34236

CERTIFICATE OF AUTHORIZATION # 4815

1.5' OF SEA LEVEL RISE CRITICAL PUBLIC INFRASTRUCTURE AND HISTORIC AREAS WITHIN CITY LIMITS

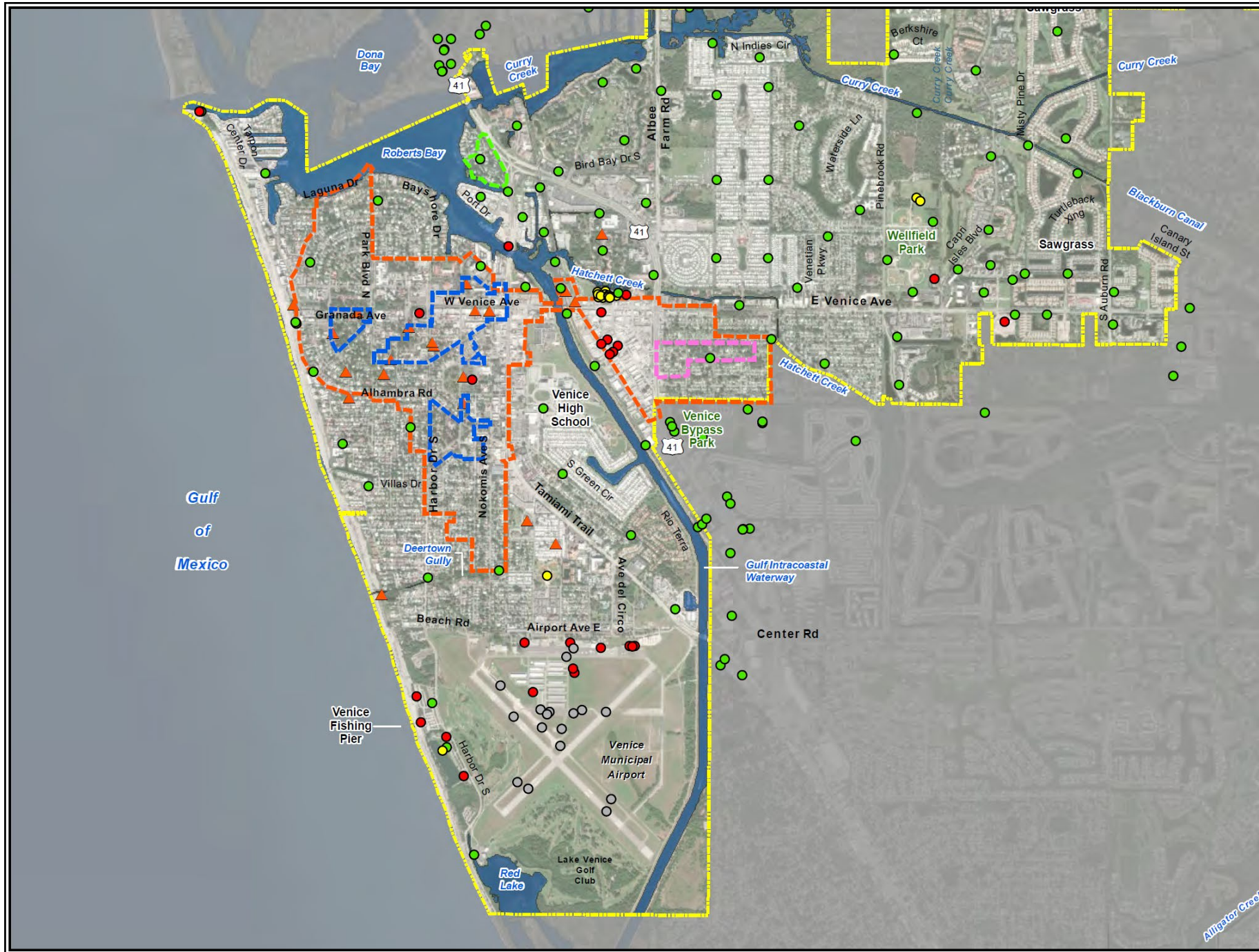
Legend

- Venice City Limits
- Critical Infrastructure**
 - Building
 - Utilities Buildings
 - Utilities Infrastructure
 - Runway/Parking
- Historic Areas/Buildings**
 - Downtown Venice
 - Eagle Point Historic District
 - Edgewood Historic District
 - John Nolen Plan of the City of Venice
 - Historic Buildings
- Return Period**
 - 1.5' of Sea Level Rise



SARASOTA COUNTY, FL

Disclaimer: This figure is not intended to show the exact location of flooding and does not account for all variables affecting future flooding such as ground water impacts, changing precipitation patterns, future construction, or erosion. As such, actual future flooding may differ from this graphic. This graphic should be used strictly as a planning reference tool and not for navigation, permitting, insurance rating, or other legal or regulatory purposes.



Alligator Creek



Taylor Engineering, Inc.

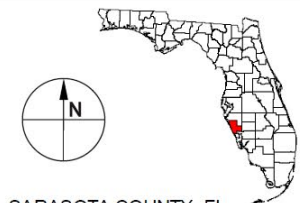
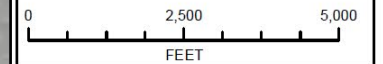
1800 2nd Street, Suite 714
Sarasota, FL 34230

CERTIFICATE OF AUTHORIZATION # 4815

3' OF SEA LEVEL RISE CRITICAL PUBLIC INFRASTRUCTURE AND HISTORIC AREAS WITHIN CITY LIMITS

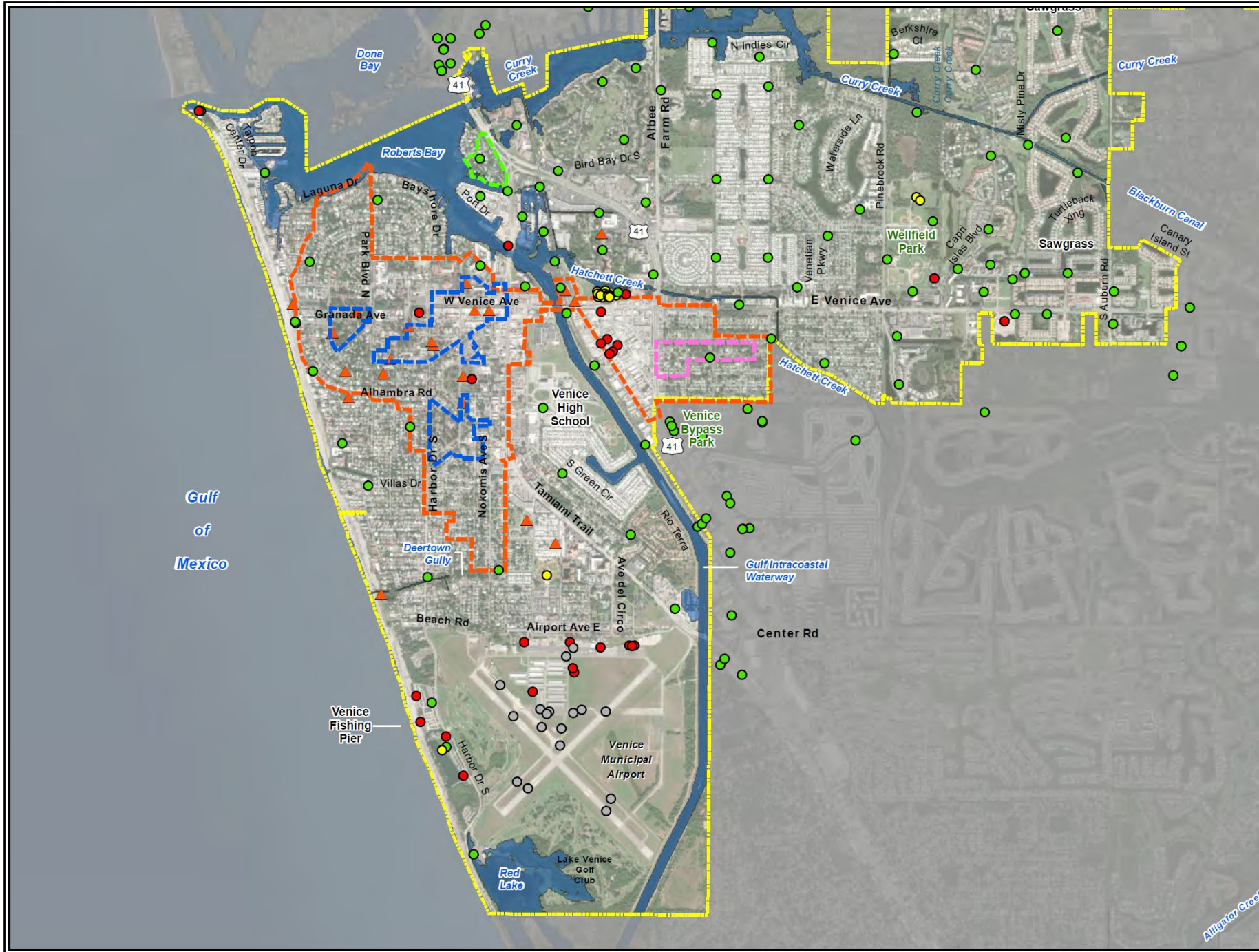
Legend

- Venice City Limits
- Critical Infrastructure**
 - Building
 - Utilities Buildings
 - Utilities Infrastructure
 - Runway/Parking
- Historic Areas/Buildings**
 - Downtown Venice
 - Eagle Point Historic District
 - Edgewood Historic District
 - John Nolen Plan of the City of Venice
 - Historic Buildings
- Return Period**
 - 3' of Sea Level Rise

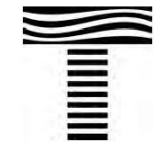


SARASOTA COUNTY, FL

Disclaimer: This figure is not intended to show the exact location of flooding and does not account for all variables affecting future flooding such as ground water impacts, changing precipitation patterns, future construction, or erosion. As such, actual future flooding may differ from this graphic. This graphic should be used strictly as a planning reference tool and not for navigation, permitting, insurance rating, or other legal or regulatory purposes.



Alligator Creek

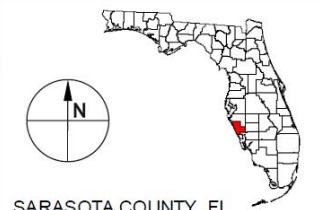
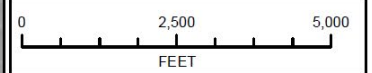


Taylor Engineering, Inc.
 1800 2nd Street, Suite 714
 Sarasota, FL 34236
 CERTIFICATE OF AUTHORIZATION # 4815

**2% ANNUAL CHANCE SWEL
 CRITICAL PUBLIC INFRASTRUCTURE
 AND HISTORIC AREAS
 WITHIN CITY LIMITS**

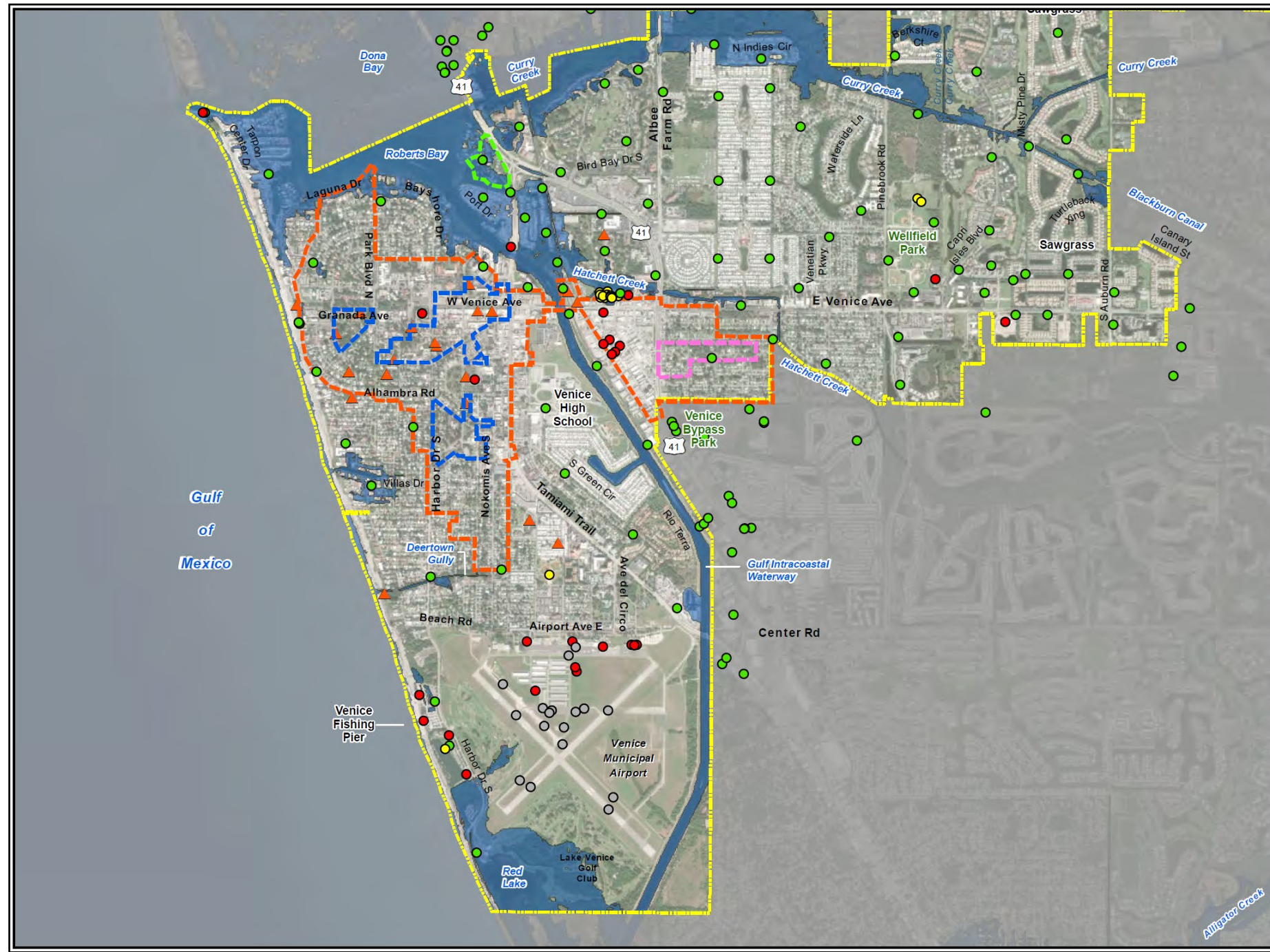
Legend

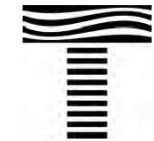
- Venice City Limits
- Critical Infrastructure**
 - Building
 - Utilities Buildings
 - Utilities Infrastructure
 - Runway/Parking
- Historic Areas/Buildings**
 - Downtown Venice
 - Eagle Point Historic District
 - Edgewood Historic District
 - John Nolen Plan of the City of Venice
 - Historic Buildings
- Return Period**
 - 2% Annual Chance SWEL



SARASOTA COUNTY, FL

Disclaimer: This figure is not intended to show the exact location of flooding and does not account for all variables affecting future flooding such as ground water impacts, changing precipitation patterns, future construction, or erosion. As such, actual future flooding may differ from this graphic. This graphic should be used strictly as a planning reference tool and not for navigation, permitting, insurance rating, or other legal or regulatory purposes.



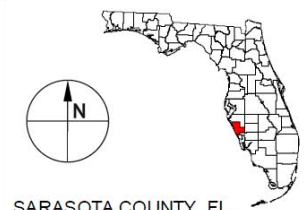
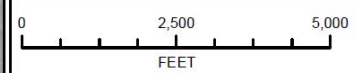


Taylor Engineering, Inc.
 1800 2nd Street, Suite 714
 Sarasota, FL 34236
 CERTIFICATE OF AUTHORIZATION # 4815

**2% ANNUAL CHANCE SWEL
 PLUS 1.5' OF SEA LEVEL RISE
 CRITICAL PUBLIC INFRASTRUCTURE
 AND HISTORIC AREAS
 WITHIN CITY LIMITS**

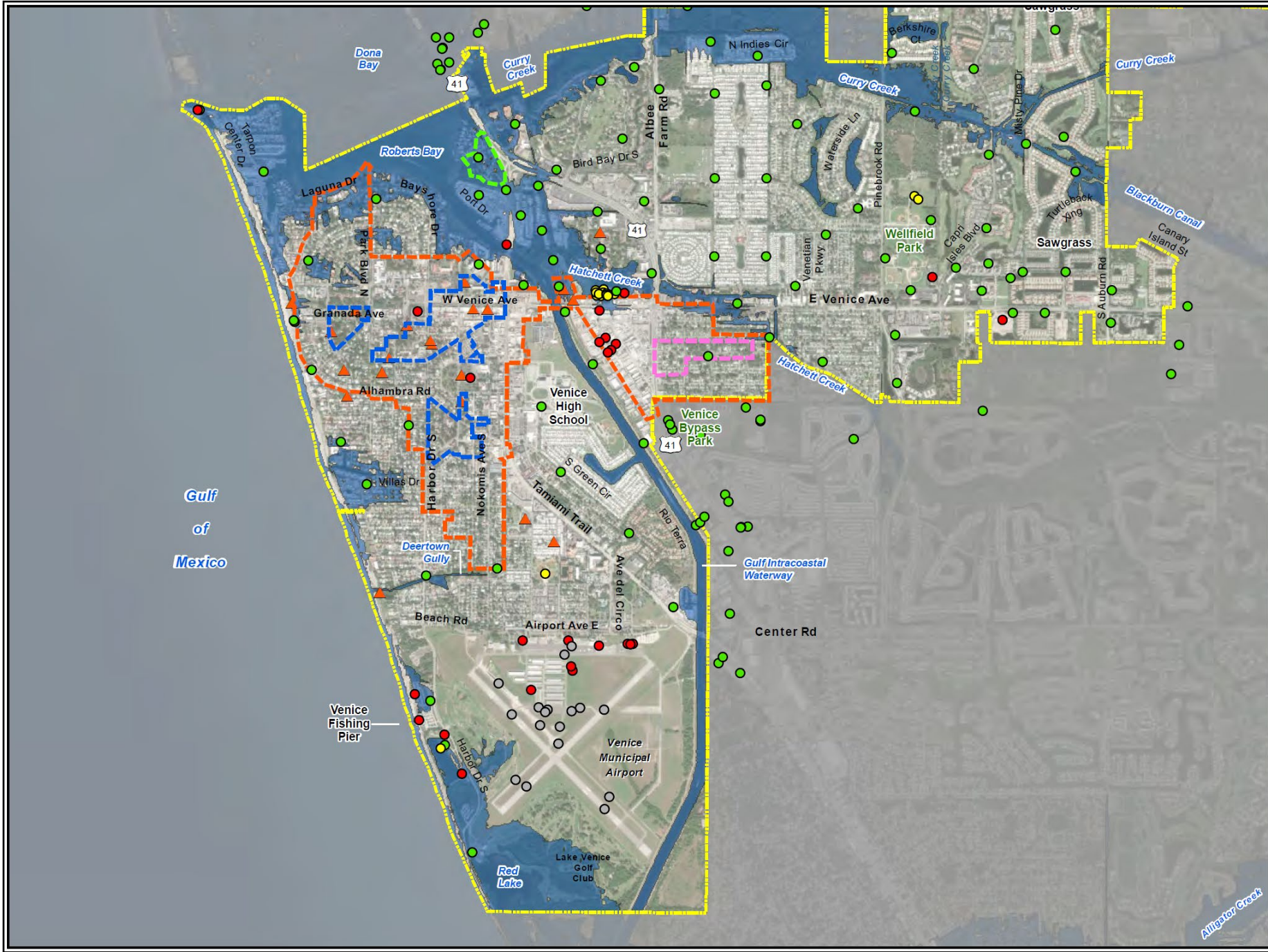
Legend

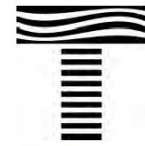
- Venice City Limits
- Critical Infrastructure**
 - Building
 - Utilities Buildings
 - Utilities Infrastructure
 - Runway/Parking
- Historic Areas/Buildings**
 - Downtown Venice
 - Eagle Point Historic District
 - Edgewood Historic District
 - John Nolen Plan of the City of Venice
 - Historic Buildings
- Return Period**
 - 2% Annual Chance SWEL plus 1.5' SLR



SARASOTA COUNTY, FL

Disclaimer: This figure is not intended to show the exact location of flooding and does not account for all variables affecting future flooding such as ground water impacts, changing precipitation patterns, future construction, or erosion. As such, actual future flooding may differ from this graphic. This graphic should be used strictly as a planning reference tool and not for navigation, permitting, insurance rating, or other legal or regulatory purposes.





Taylor Engineering, Inc.

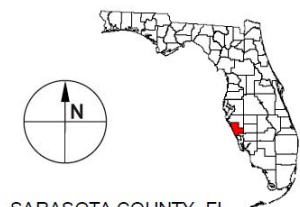
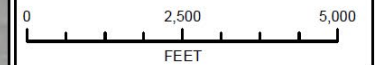
1800 2nd Street, Suite 714
Sarasota, FL 34236

CERTIFICATE OF AUTHORIZATION # 4815

**2% ANNUAL CHANCE SWEL
PLUS 3' OF SEA LEVEL RISE
CRITICAL PUBLIC INFRASTRUCTURE
AND HISTORIC AREAS
WITHIN CITY LIMITS**

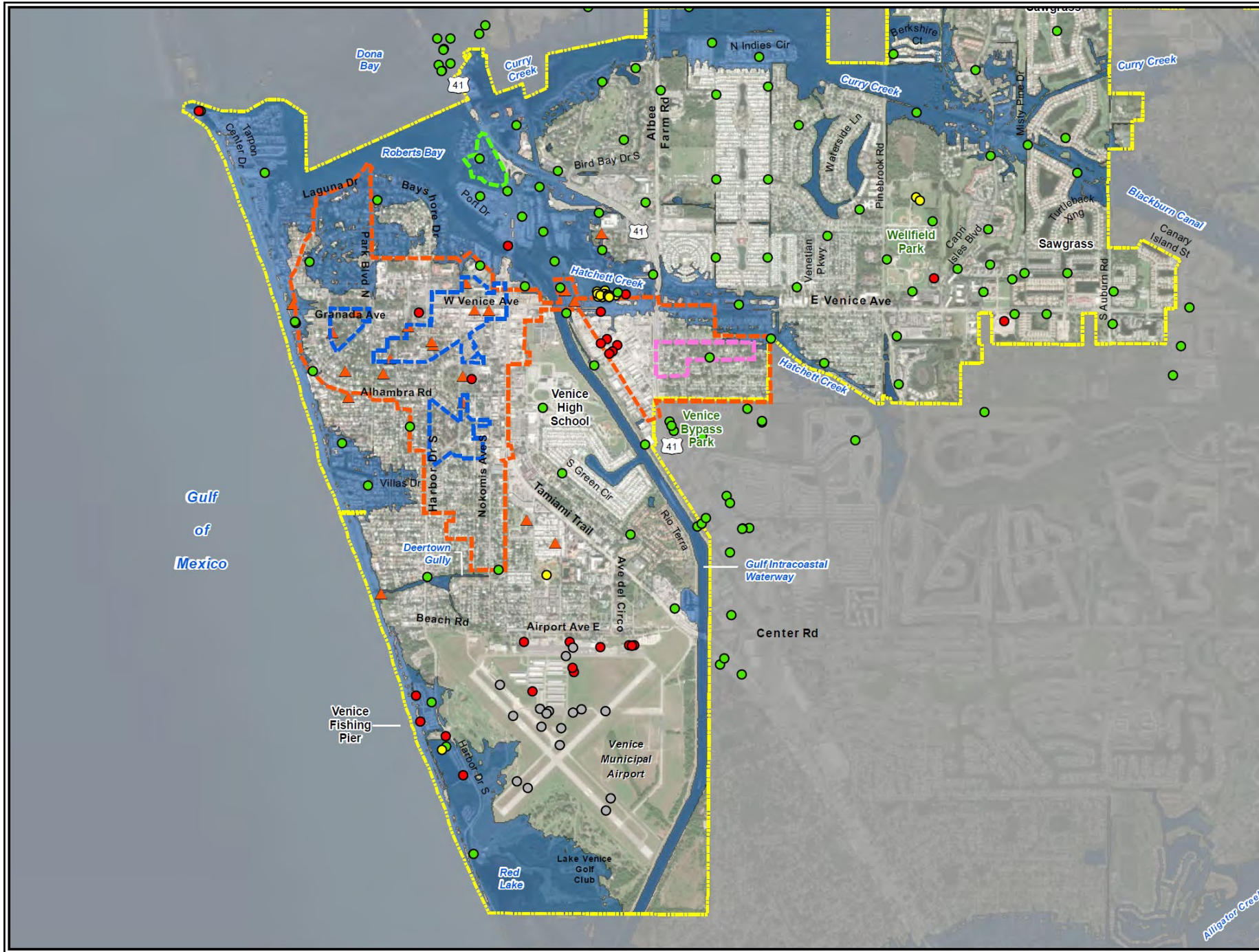
Legend

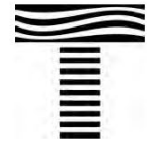
- Venice City Limits
- Critical Infrastructure**
 - Building
 - Utilities Buildings
 - Utilities Infrastructure
 - Runway/Parking
- Historic Areas/Buildings**
 - Downtown Venice
 - Eagle Point Historic District
 - Edgewood Historic District
 - John Nolen Plan of the City of Venice
 - Historic Buildings
- Return Period**
 - 2% Annual Chance SWEL plus 3' SLR



SARASOTA COUNTY, FL

Disclaimer: This figure is not intended to show the exact location of flooding and does not account for all variables affecting future flooding such as ground water impacts, changing precipitation patterns, future construction, or erosion. As such, actual future flooding may differ from this graphic. This graphic should be used strictly as a planning reference tool and not for navigation, permitting, insurance rating, or other legal or regulatory purposes.





Taylor Engineering, Inc.

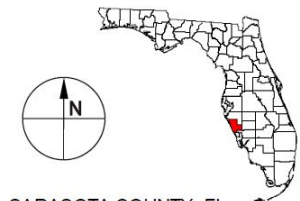
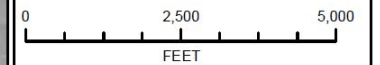
1800 2nd Street, Suite 714
Sarasota, FL 34236

CERTIFICATE OF AUTHORIZATION # 4815

1% ANNUAL CHANCE SWEL CRITICAL PUBLIC INFRASTRUCTURE AND HISTORIC AREAS WITHIN CITY LIMITS

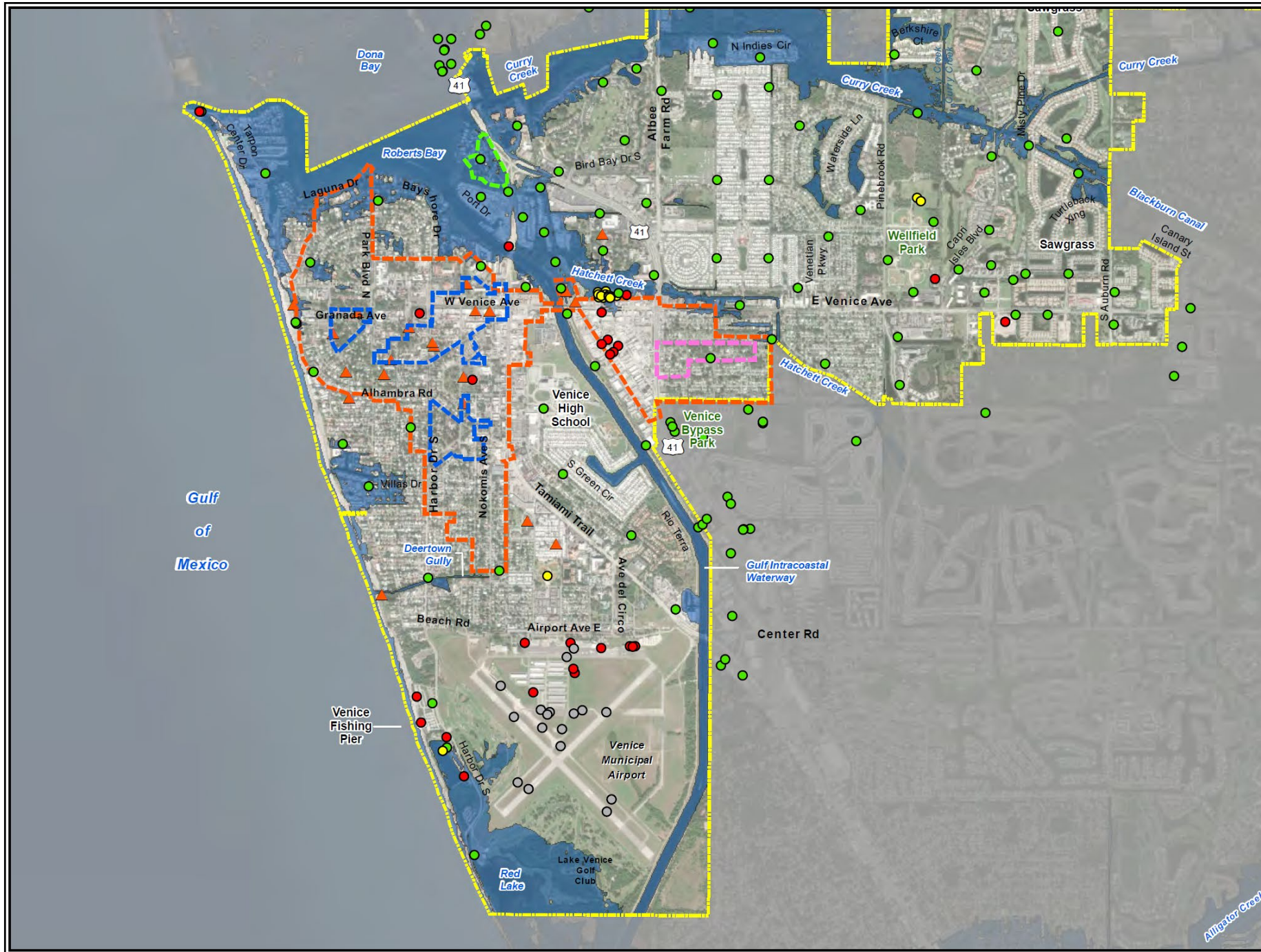
Legend

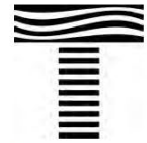
- Venice City Limits
- Critical Infrastructure**
 - Building
 - Utilities Buildings
 - Utilities Infrastructure
 - Runway/Parking
- Historic Areas/Buildings**
 - Downtown Venice
 - Eagle Point Historic District
 - Edgewood Historic District
 - John Nolen Plan of the City of Venice
 - Historic Buildings
- Return Period**
 - 1% Annual Chance SWEL



SARASOTA COUNTY, FL

Disclaimer: This figure is not intended to show the exact location of flooding and does not account for all variables affecting future flooding such as ground water impacts, changing precipitation patterns, future construction, or erosion. As such, actual future flooding may differ from this graphic. This graphic should be used strictly as a planning reference tool and not for navigation, permitting, insurance rating, or other legal or regulatory purposes.





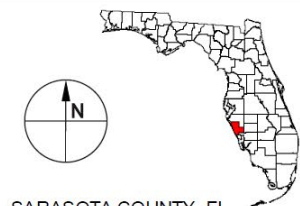
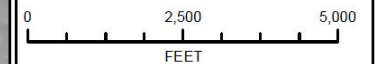
Taylor Engineering, Inc.
1800 2nd Street, Suite 714
Sarasota, FL 34236

CERTIFICATE OF AUTHORIZATION # 4815

**1% ANNUAL CHANCE SWEL
PLUS 1.5' OF SEA LEVEL RISE
CRITICAL PUBLIC INFRASTRUCTURE
AND HISTORIC AREAS
WITHIN CITY LIMITS**

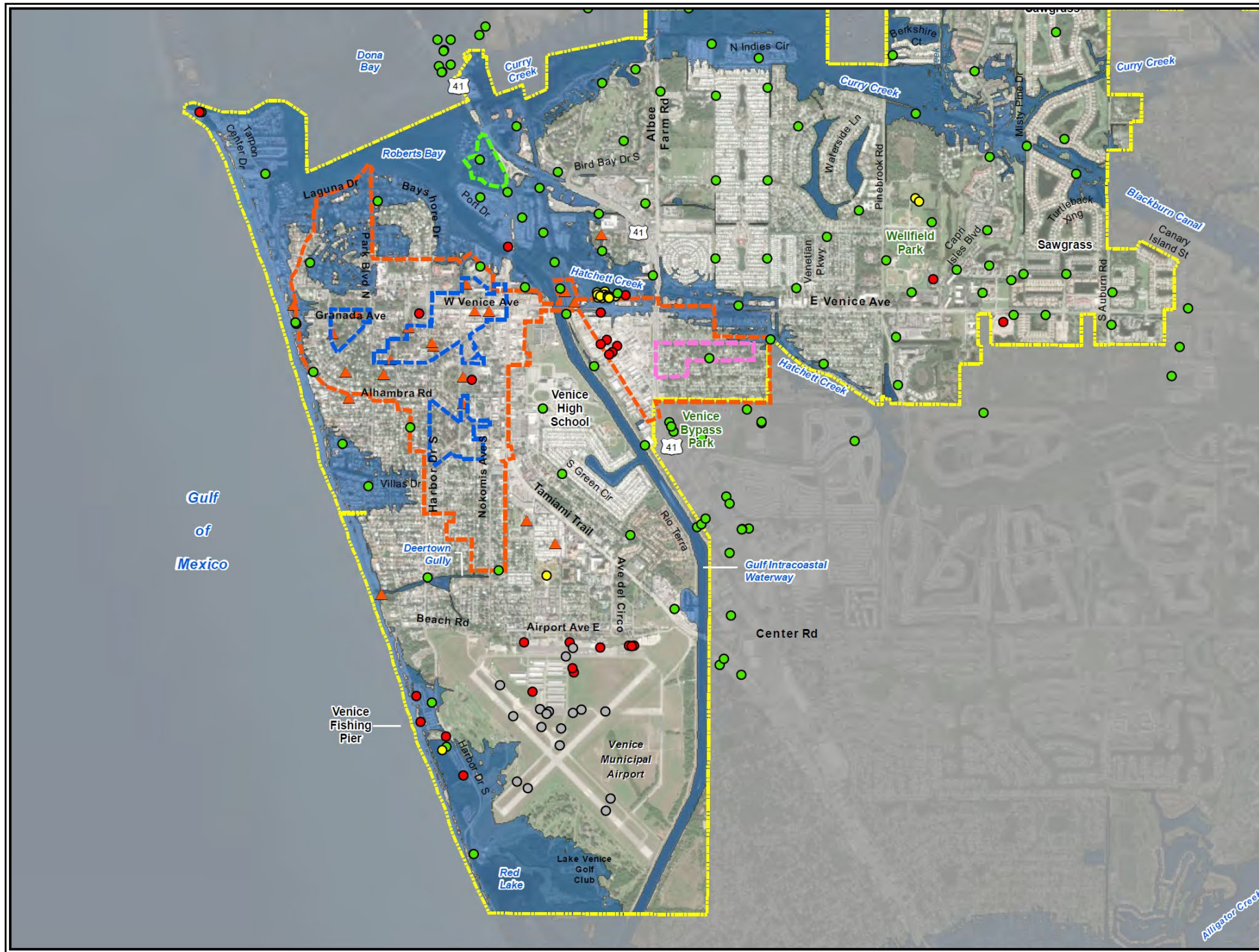
Legend

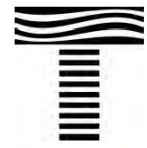
- Venice City Limits
- Critical Infrastructure**
 - Building
 - Utilities Buildings
 - Utilities Infrastructure
 - Runway/Parking
- Historic Areas/Buildings**
 - Downtown Venice
 - Eagle Point Historic District
 - Edgewood Historic District
 - John Nolen Plan of the City of Venice
 - Historic Buildings
- Return Period**
 - 1% Annual Chance SWEL plus 1.5' SLR



SARASOTA COUNTY, FL

Disclaimer: This figure is not intended to show the exact location of flooding and does not account for all variables affecting future flooding such as ground water impacts, changing precipitation patterns, future construction, or erosion. As such, actual future flooding may differ from this graphic. This graphic should be used strictly as a planning reference tool and not for navigation, permitting, insurance rating, or other legal or regulatory purposes.



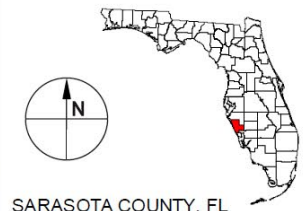
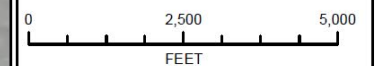


Taylor Engineering, Inc.
 1800 2nd Street, Suite 714
 Sarasota, FL 34236
 CERTIFICATE OF AUTHORIZATION #4615

**1% ANNUAL CHANCE SWEL
 PLUS 3' OF SEA LEVEL RISE
 CRITICAL PUBLIC INFRASTRUCTURE
 AND HISTORIC AREAS
 WITHIN CITY LIMITS**

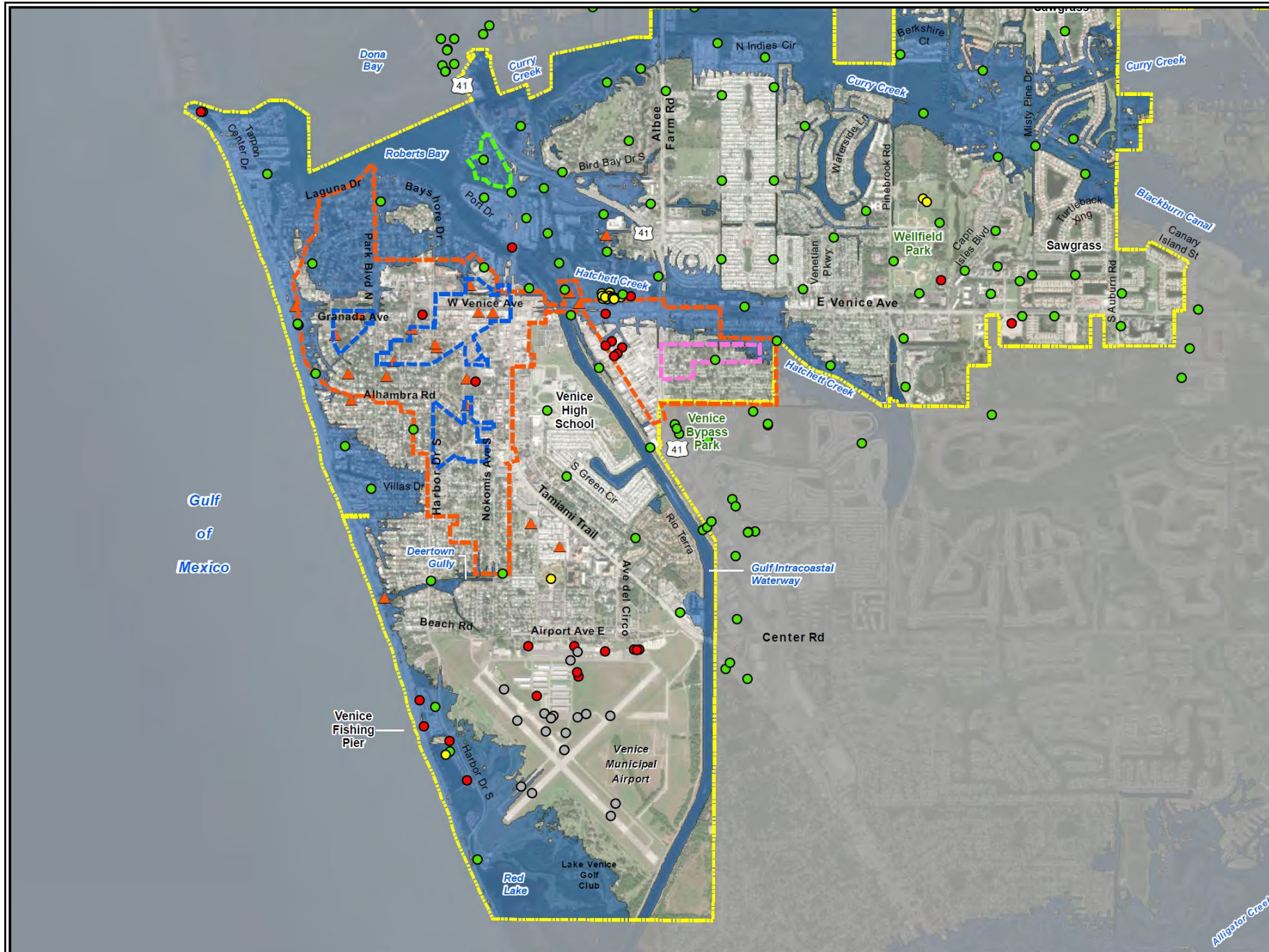
Legend

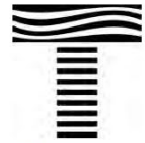
- Venice City Limits
- Critical Infrastructure**
 - Building
 - Utilities Buildings
 - Utilities Infrastructure
 - Runway/Parking
- Historic Areas/Buildings**
 - Downtown Venice
 - Eagle Point Historic District
 - Edgewood Historic District
 - John Nolen Plan of the City of Venice
 - Historic Buildings
- Return Period**
 - 1% Annual Chance SWEL plus 3' SLR



SARASOTA COUNTY, FL

Disclaimer: This figure is not intended to show the exact location of flooding and does not account for all variables affecting future flooding such as ground water impacts, changing precipitation patterns, future construction, or erosion. As such, actual future flooding may differ from this graphic. This graphic should be used strictly as a planning reference tool and not for navigation, permitting, insurance rating, or other legal or regulatory purposes.



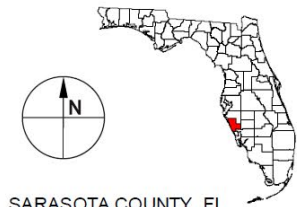
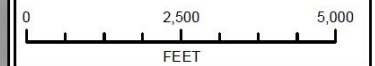


Taylor Engineering, Inc.
 1800 2nd Street, Suite 714
 Sarasota, FL 34236
 CERTIFICATE OF AUTHORIZATION # 4815

**MEAN HIGHER HIGH WATER
 CRITICAL PUBLIC INFRASTRUCTURE
 AND HISTORIC AREAS
 WITHIN CITY LIMITS**

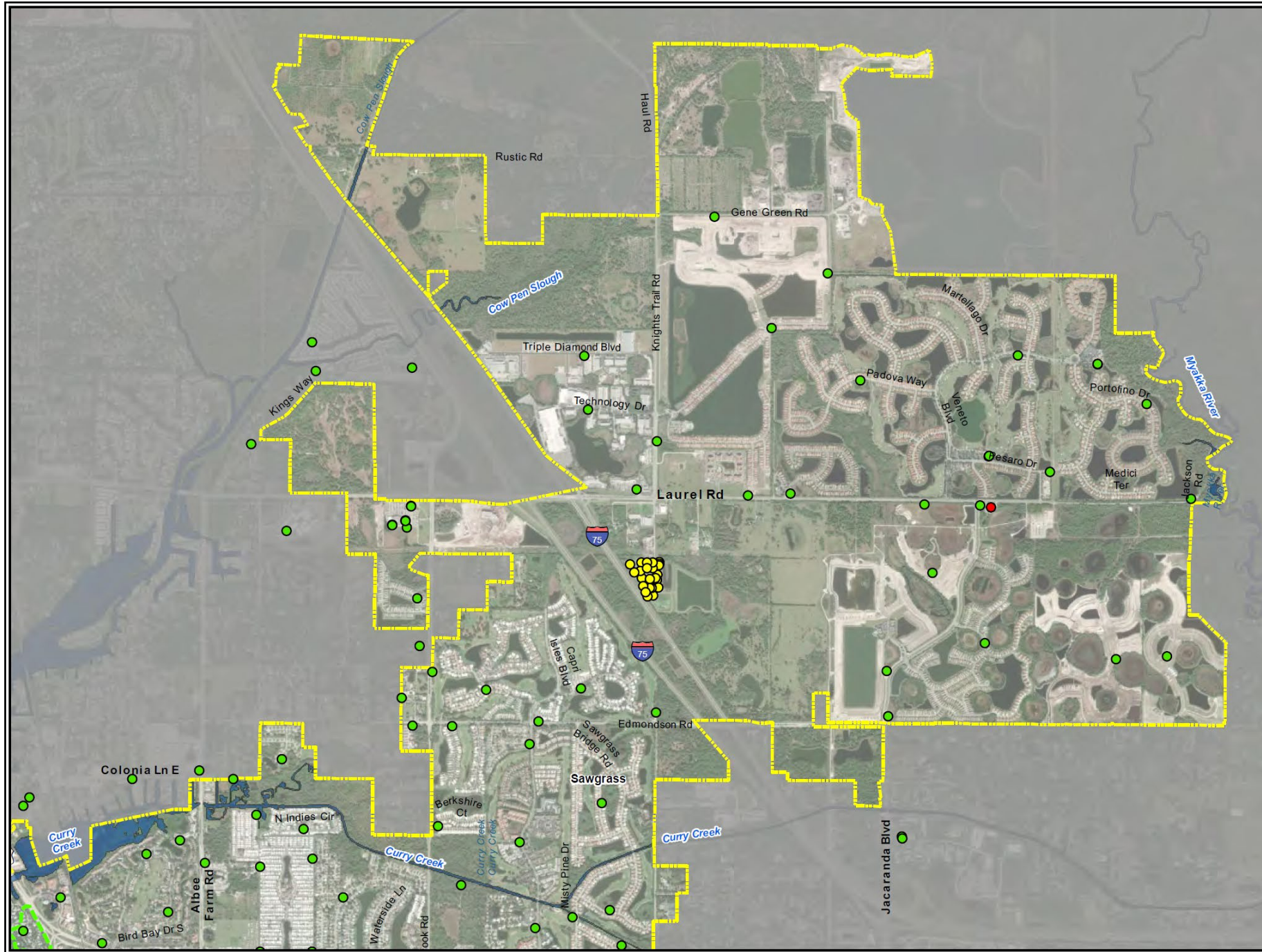
Legend

- Venice City Limits
- Critical Infrastructure**
 - Building
 - Utilities Buildings
 - Utilities Infrastructure
 - Runway/Parking
- Historic Areas/Buildings**
 - Downtown Venice
 - Eagle Point Historic District
 - Edgewood Historic District
 - John Nolen Plan of the City of Venice
 - Historic Buildings
- Return Period**
 - Mean Higher High Water



SARASOTA COUNTY, FL

Disclaimer: This figure is not intended to show the exact location of flooding and does not account for all variables affecting future flooding such as ground water impacts, changing precipitation patterns, future construction, or erosion. As such, actual future flooding may differ from this graphic. This graphic should be used strictly as a planning reference tool and not for navigation, permitting, insurance rating, or other legal or regulatory purposes.



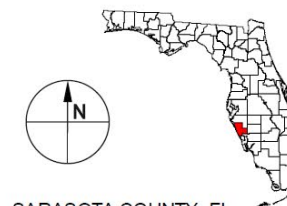
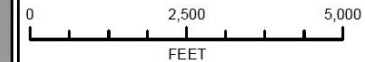


Taylor Engineering, Inc.
 1800 2nd Street, Suite 714
 Sarasota, FL 34236
 CERTIFICATE OF AUTHORIZATION # 4815

**3' OF SEA LEVEL RISE
 CRITICAL PUBLIC INFRASTRUCTURE
 AND HISTORIC AREAS
 WITHIN CITY LIMITS**

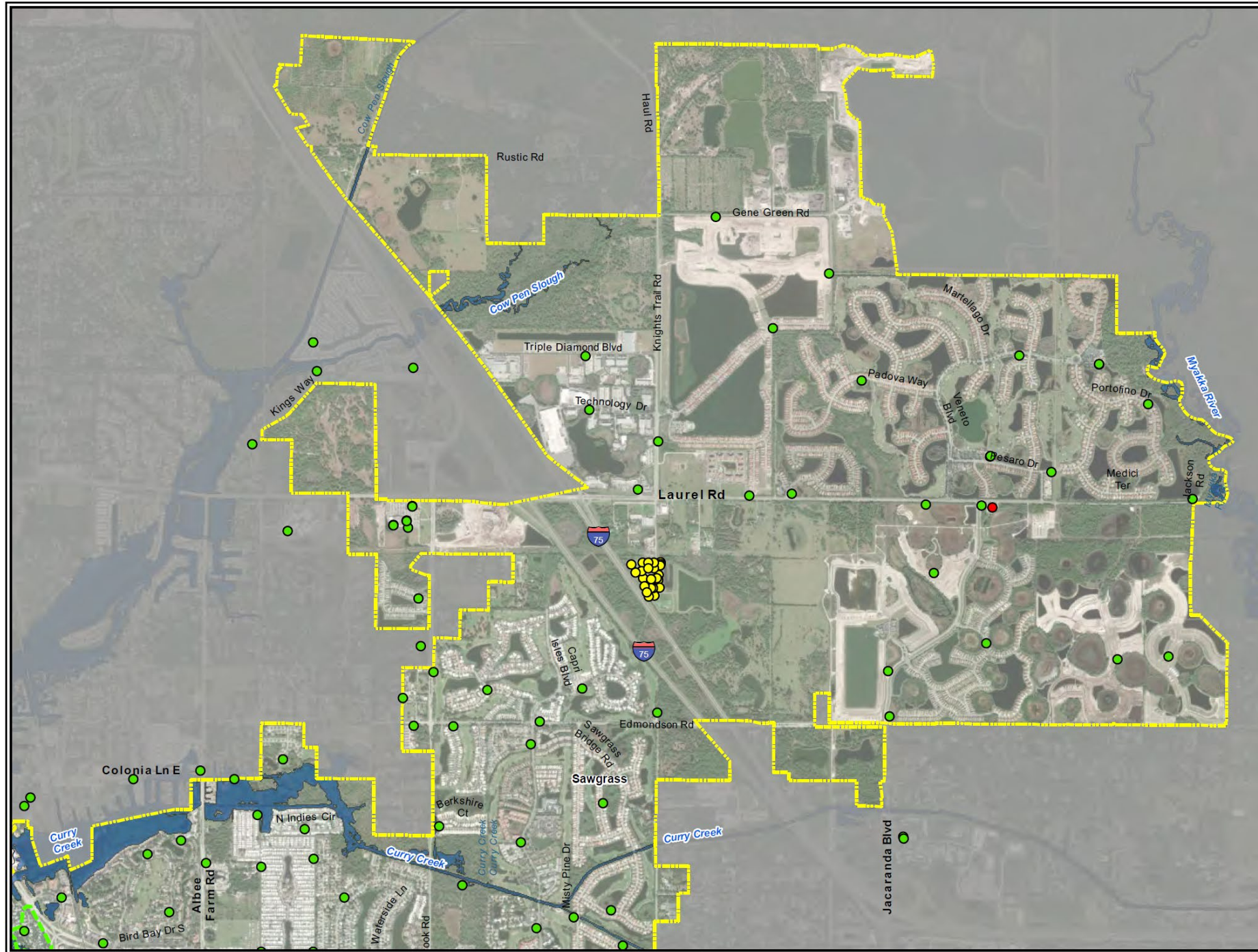
Legend

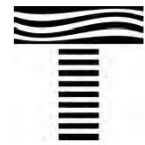
- Venice City Limits
- Critical Infrastructure**
 - Building
 - Utilities Buildings
 - Utilities Infrastructure
 - Runway/Parking
- Historic Areas/Buildings**
 - Downtown Venice
 - Eagle Point Historic District
 - Edgewood Historic District
 - John Nolen Plan of the City of Venice
 - Historic Buildings
- Return Period**
 - 3' of Sea Level Rise



SARASOTA COUNTY, FL

Disclaimer: This figure is not intended to show the exact location of flooding and does not account for all variables affecting future flooding such as ground water impacts, changing precipitation patterns, future construction, or erosion. As such, actual future flooding may differ from this graphic. This graphic should be used strictly as a planning reference tool and not for navigation, permitting, insurance rating, or other legal or regulatory purposes.



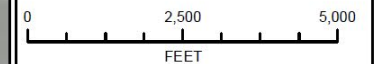


Taylor Engineering, Inc.
 1800 2nd Street, Suite 714
 Sarasota, FL 34236
 CERTIFICATE OF AUTHORIZATION # 4815

**2% ANNUAL CHANCE SWEL
 CRITICAL PUBLIC INFRASTRUCTURE
 AND HISTORIC AREAS
 WITHIN CITY LIMITS**

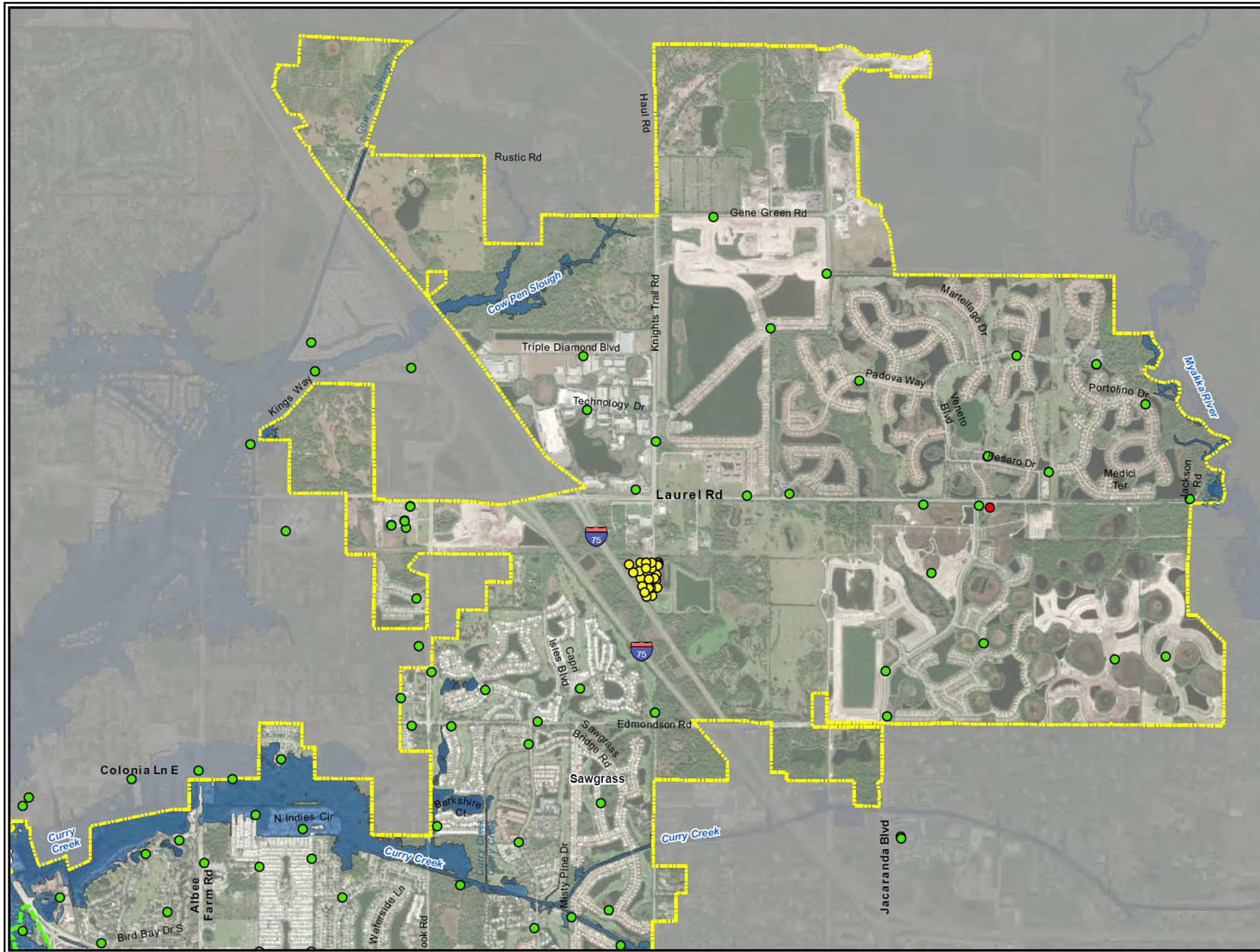
Legend

- Venice City Limits
- Critical Infrastructure**
 - Building
 - Utilities Buildings
 - Utilities Infrastructure
 - Runway/Parking
- Historic Areas/Buildings**
 - Downtown Venice
 - Eagle Point Historic District
 - Edgewood Historic District
 - John Nolen Plan of the City of Venice
 - Historic Buildings
- Return Period**
 - 2% Annual Chance SWEL



SARASOTA COUNTY, FL

Disclaimer: This figure is not intended to show the exact location of flooding and does not account for all variables affecting future flooding such as ground water impacts, changing precipitation patterns, future construction, or erosion. As such, actual future flooding may differ from this graphic. This graphic should be used strictly as a planning reference tool and not for navigation, permitting, insurance rating, or other legal or regulatory purposes.



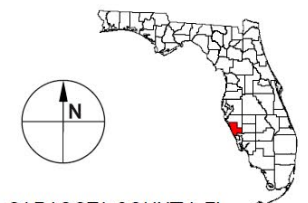
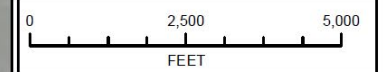


Taylor Engineering, Inc.
 1800 2nd Street, Suite 714
 Sarasota, FL 34236
 CERTIFICATE OF AUTHORIZATION # 4815

**2% ANNUAL CHANCE SWEL
 PLUS 1.5' OF SEA LEVEL RISE
 CRITICAL PUBLIC INFRASTRUCTURE
 AND HISTORIC AREAS
 WITHIN CITY LIMITS**

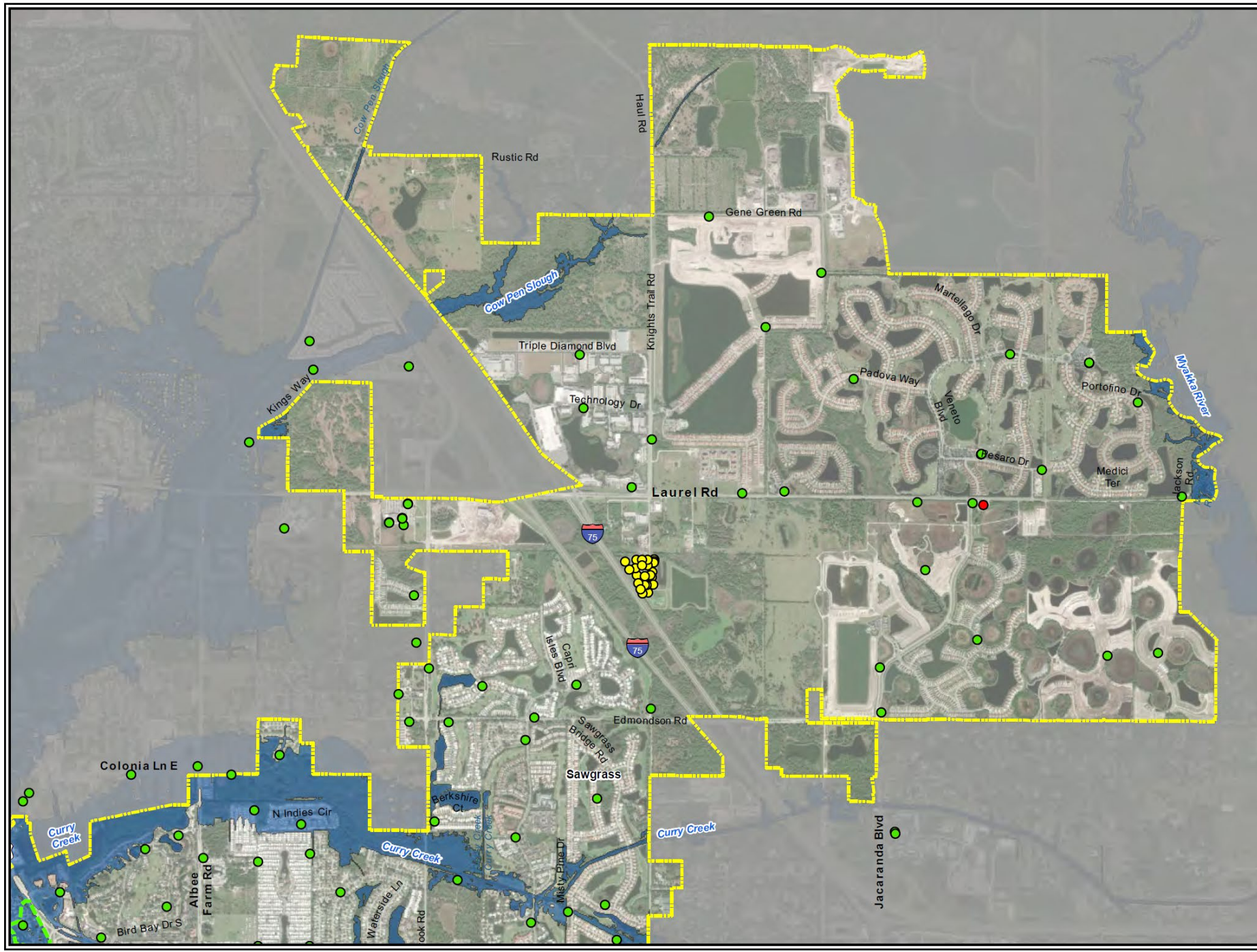
Legend

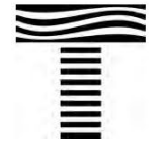
- Venice City Limits
- Critical Infrastructure**
 - Building
 - Utilities Buildings
 - Utilities Infrastructure
 - Runway/Parking
- Historic Areas/Buildings**
 - Downtown Venice
 - Eagle Point Historic District
 - Edgewood Historic District
 - John Nolen Plan of the City of Venice
 - Historic Buildings
- Return Period**
 - 2% Annual Chance SWEL plus 1.5' SLR



SARASOTA COUNTY, FL

Disclaimer: This figure is not intended to show the exact location of flooding and does not account for all variables affecting future flooding such as ground water impacts, changing precipitation patterns, future construction, or erosion. As such, actual future flooding may differ from this graphic. This graphic should be used strictly as a planning reference tool and not for navigation, permitting, insurance rating, or other legal or regulatory purposes.





Taylor Engineering, Inc.

1800 2nd Street, Suite 714
Sarasota, FL 34236

CERTIFICATE OF AUTHORIZATION # 4815

**2% ANNUAL CHANCE SWEL
PLUS 3' OF SEA LEVEL RISE
CRITICAL PUBLIC INFRASTRUCTURE
AND HISTORIC AREAS
WITHIN CITY LIMITS**

Legend

Venice City Limits

Critical Infrastructure

Building

Utilities Buildings

Utilities Infrastructure

Runway/Parking

Historic Areas/Buildings

Downtown Venice

Eagle Point Historic District

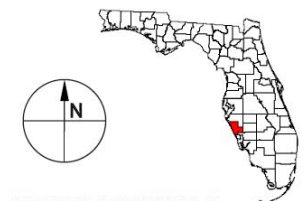
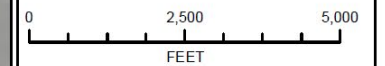
Edgewood Historic District

John Nolen Plan of the City of Venice

Historic Buildings

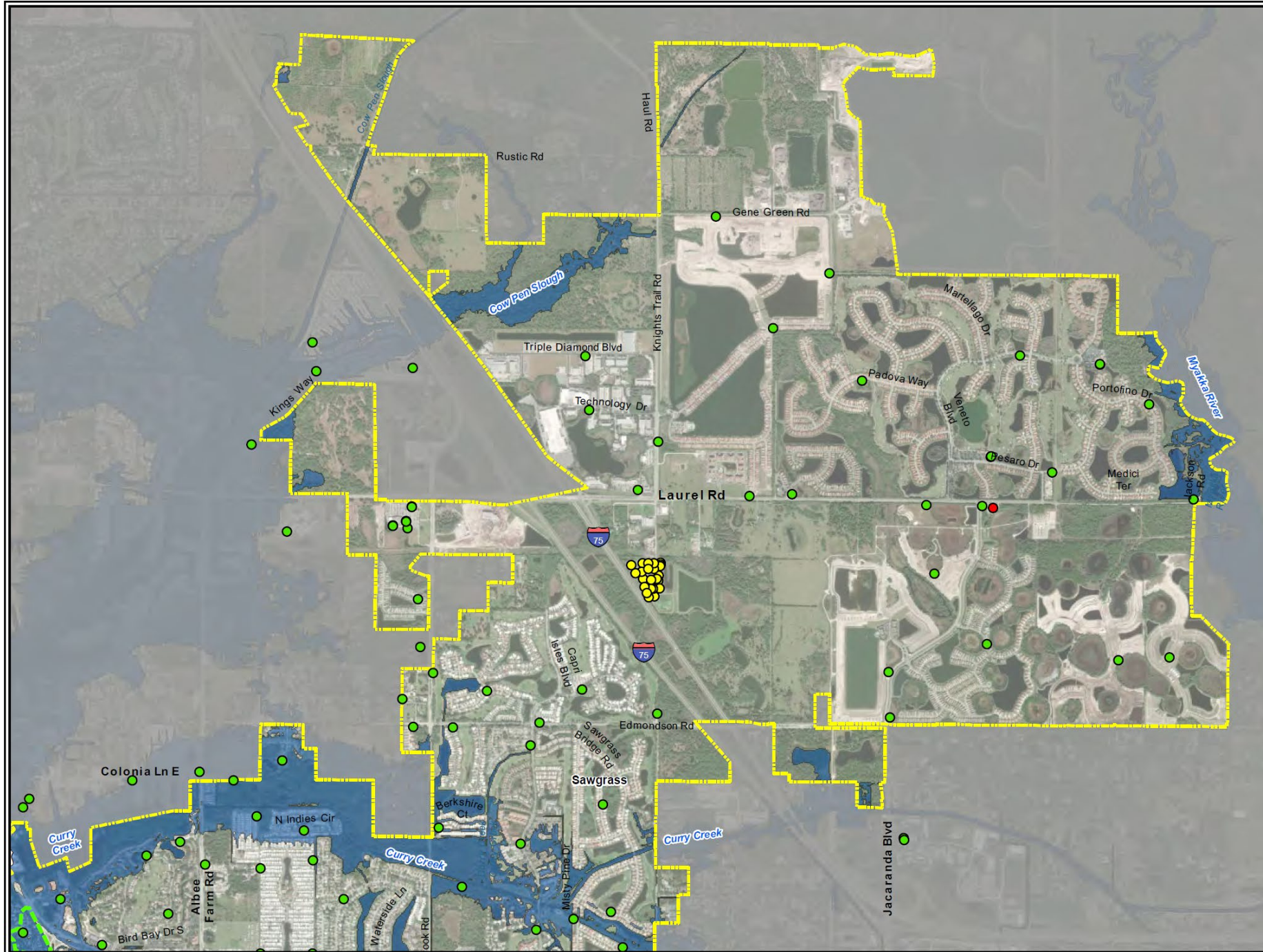
Return Period

2% Annual Chance SWEL plus 3' SLR



SARASOTA COUNTY, FL

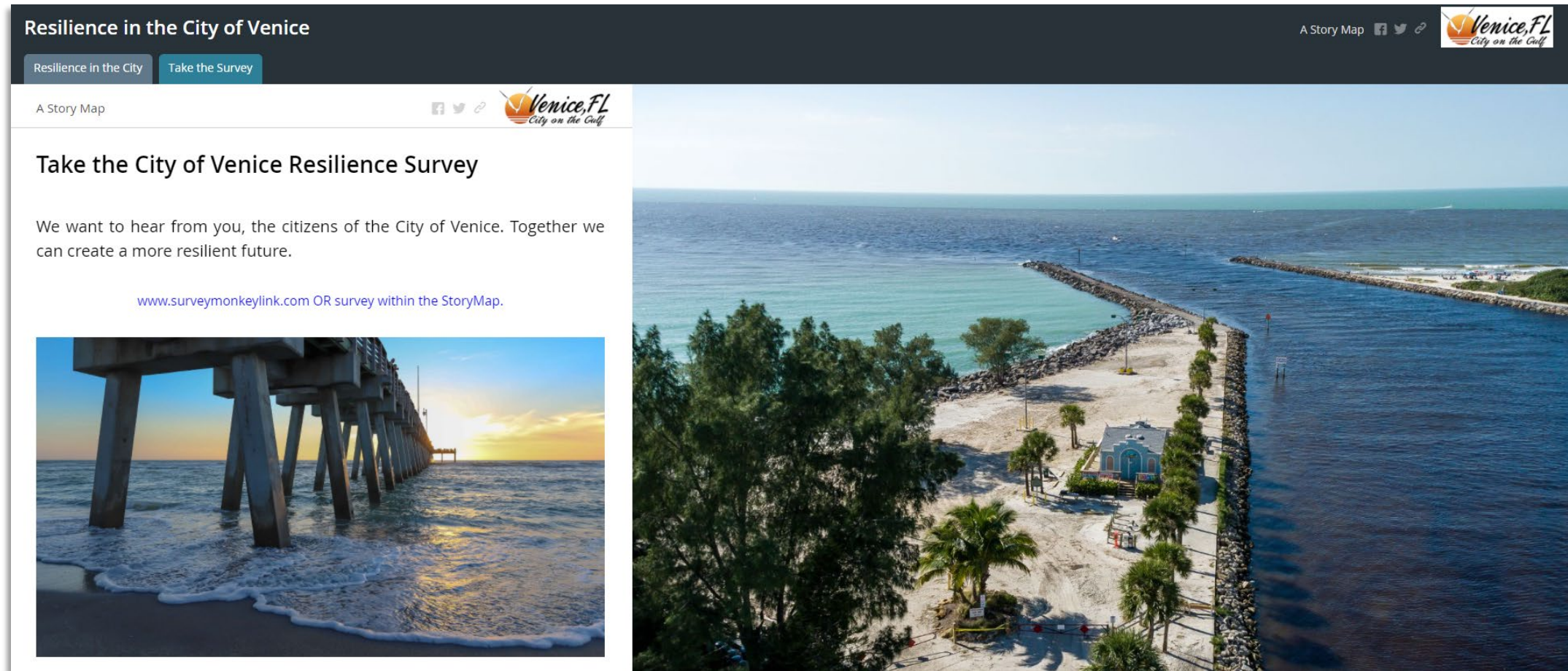
Disclaimer: This figure is not intended to show the exact location of flooding and does not account for all variables affecting future flooding such as ground water impacts, changing precipitation patterns, future construction, or erosion. As such, actual future flooding may differ from this graphic. This graphic should be used strictly as a planning reference tool and not for navigation, permitting, insurance rating, or other legal or regulatory purposes.



Summary of Vulnerability Analysis

	Total Number of Assets Evaluated (or Square Ft for District)	1.5 ft SLR	3.0 ft SLR	2% Annual Chance Flood	1% Annual Chance Flood	1.5 ft SLR + 2% Annual Chance	1.5 ft SLR + 1% Annual Chance	3.0 ft SLR + 2% Annual Chance	3.0 ft SLR + 1% Annual Chance
Critical Assets	258	0%	2%	11%	16%	16%	22%	23%	34%
Historic Assets	21	0%	0%	0%	10%	10%	19%	19%	24%
Edgewood Historic District	1,224,335	0%	0%	0%	0%	0%	0%	0%	9%
Eagle Point Historic District	653,998	2%	7%	72%	96%	99%	94%	100%	100%
John Nolen Plan	34,595,339	0%	0%	0%	0%	0%	0%	0%	23%
Downtown Venice ACD	4,994,235	0%	0%	0%	0%	0%	0%	0%	1%

Public Outreach - Resilient Venice StoryMap Website



Two Phase Rollout of StoryMap

- Phase I: Project Introduction & Survey Link
- Phase II: Full Interactive StoryMap


Public Outreach - Resilient Venice StoryMap Website

Resilience in the City of Venice

A Story Map

Resilience in the City of Venice

Through a study funded by the Florida Department of Environmental Protection's Resilient Coastlines Program, the City of Venice is working with Taylor Engineering to perform resilience planning.



The project includes a vulnerability assessment for city infrastructure. This assessment consists of three analyses:

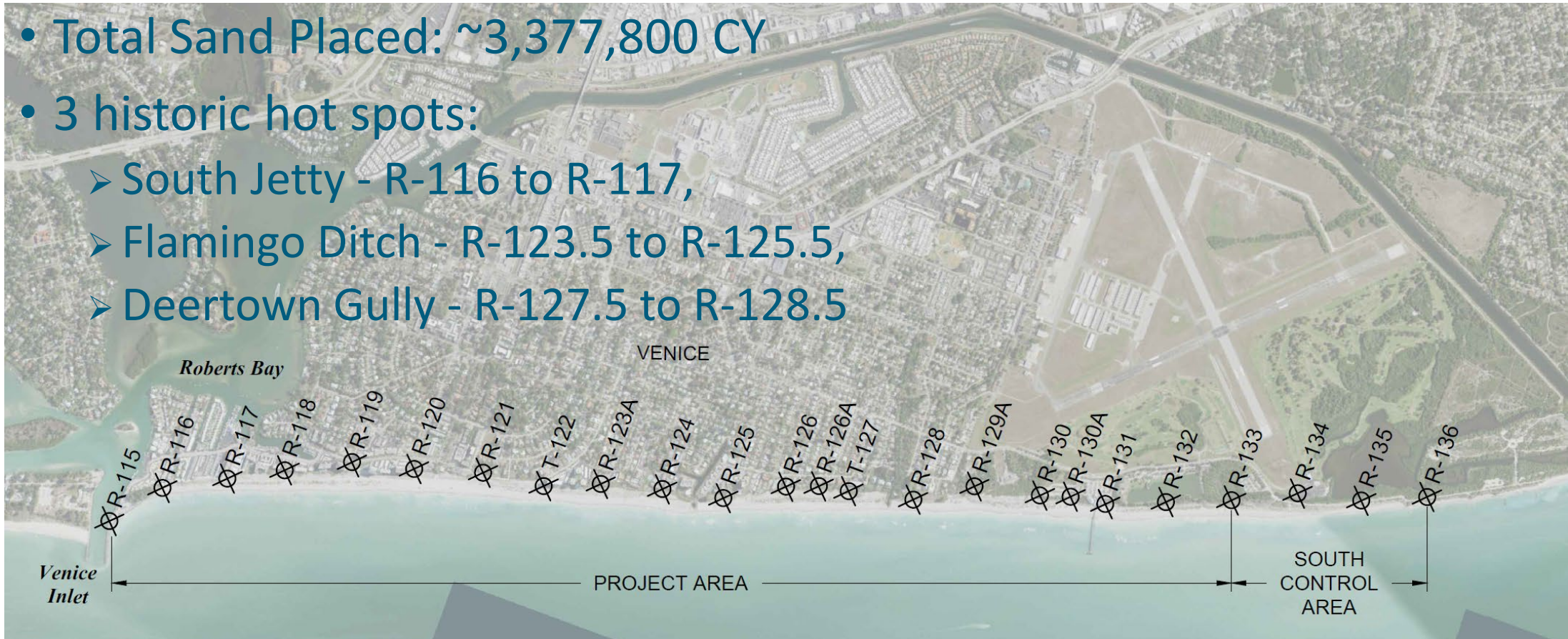
- Exposure — the amount of contact an asset has with a source of stress;
- Sensitivity — the degree of impact and whether there are existing sources of stress; and
- Adaptive capacity — the asset's ability to adjust, repair or respond.

After this assessment has been conducted, adaptation and resilient strategies will be developed for at-risk structures.

- Project Overview: Adaptation and Resilience Defined
- Vulnerable Infrastructure: Overview and Highlights
- Adaptation Strategies: Outline Opportunities
- Sea Level Rise Viewer
- Survey Results: Citizen Priorities
- Resources: City, Regional, and National Resources

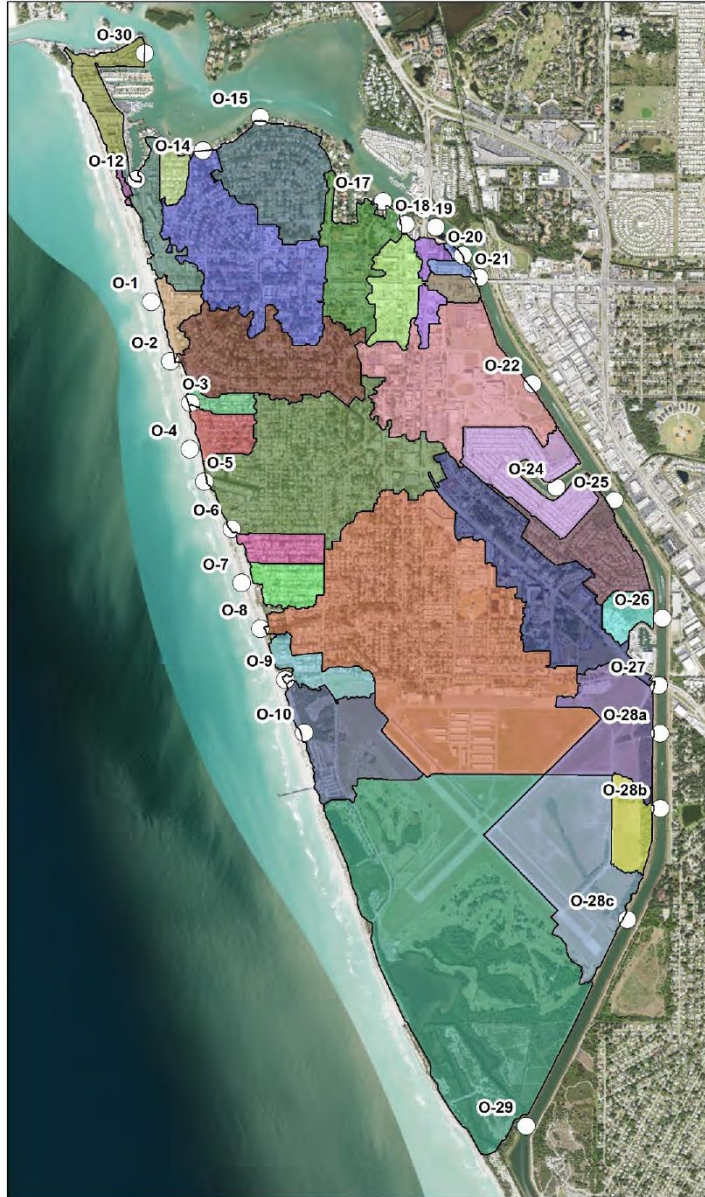
Adaptation: Beach Renourishment

- Total Sand Placed: ~3,377,800 CY
- 3 historic hot spots:
 - South Jetty - R-116 to R-117,
 - Flamingo Ditch - R-123.5 to R-125.5,
 - Deertown Gully - R-127.5 to R-128.5



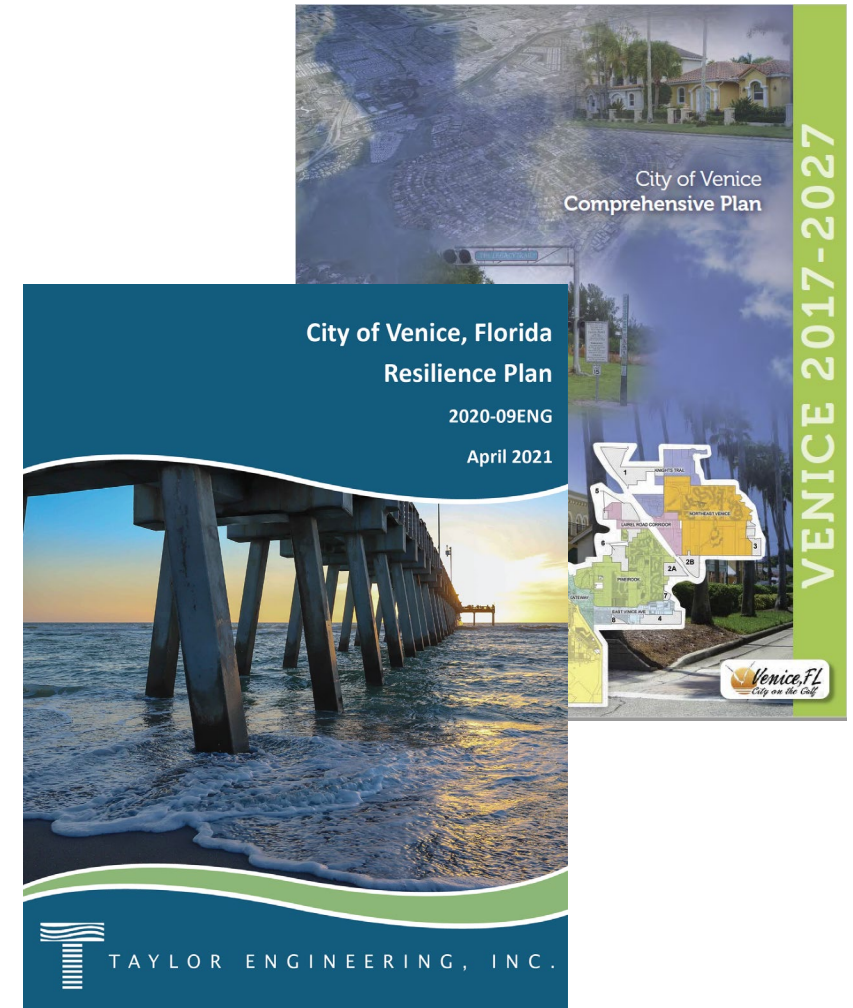
Date	Monuments	Description	Volume (CY)
Aug - Dec 1994	R-116 to R-123A	Phase I	890,000
Dec 1995 - May 1996	R-121 to R-133	Phase II	1,033,000
June - Aug 2005	R-116 to R-133	First Maintenance	672,208
January - April 2015	R-116 to R-133	Second Maintenance	782,600*

Adaptation: Stormwater Improvements



Next Steps

- Identify and Prioritize Projects
 - Remove/Reduce Outfall pipes along beach
 - Tarpon Center Drive Seawall Improvements
 - Stormwater System Upgrades
 - Water Treatment Plant Protection
- Utilities AWIA Risk & Resiliency Assessment (underway)
- Pursue Funding via Grant Opportunities
- Pursue Public-Private-NGO Partnerships
- Add Resilience to Comprehensive Plan
- Update Resilience Plan With New Data





THANK YOU

Questions?



jphillips@taylorengineering.com
kweeden@venicefl.gov